

## DRAM Installation

Step 1 Make sure system power is off. Loosen the lateral cover screws to remove the cover as shown.



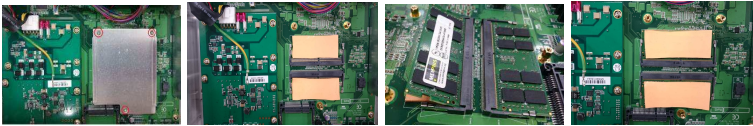
Step 2 Loosen the lateral screws as shown.



Step 3 Pull out the front bezel and the internal bracket as shown.



Step 4 Remove the DRAM cover by loosening the screws. Install DRAM and then stick the thermal pad on it.



Step 5 Secure the DRAM cover by fastening the screws, and then install the internal bracket and the front bezel. Fasten the lateral screws as shown to complete the installation.



## tBOX324-894-GND Quick Installation Guide

### Checklist

#### Standard Accessories

- ✓ tBOX324-894-GND series System Unit x 1
- ✓ Quick Installation Guide x 1
- ✓ CD x 1 (w/ Driver & Manual)
- ✓ Foot Pad x 4
- ✓ Screws Pack x 1
- ✓ Wall Mount Bracket x 1
- ✓ SATA Drive Key x 2
- ✓ DRAM Thermal Pad x 4
- ✓ DC-IN Connector

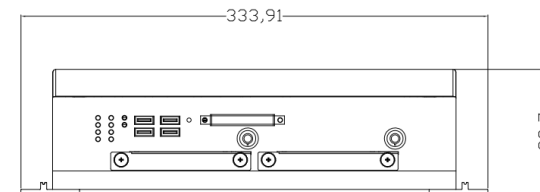
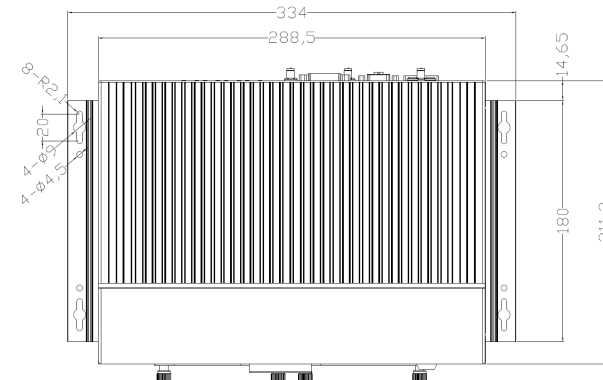
#### Optional Accessories

- ✓ SATA Drive (HDD or SSD)
- ✓ PCI Express Mini Card
- ✓ Remote Switch Cable
- ✓ M12 LAN Cable
- ✓ Wireless Module
- ✓ M12 Power Cable

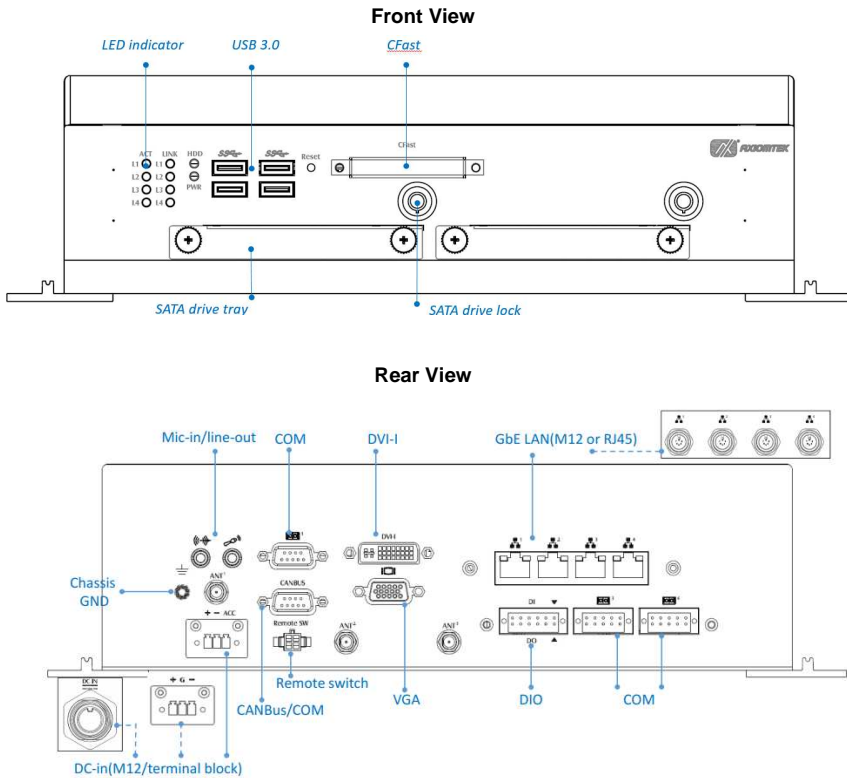
**Note:** Please contact your local supplier immediately if any of the above-mentioned items is missing or damaged.

### Dimensions

tBOX324-894-GND series



## I/O Outlets



### Power Input explanation:

- ▲ 24VDC-in marine application (TB: + G -)
- ▲ 110VDC-in railway application (M12: DC IN)
- ▲ 12/24VDC-in vehicle application (TB: + - ACC)

## Hardware Installation

### SATA drive and CFast Installation

**Step 1** Make sure system power is off. Loosen the screws of the SATA drive tray and then pull out the tray as shown.



**Step 2** Slide an HDD into the tray as shown in the picture. Insert screws into each side of the SATA drive through the corresponding holes and fasten the screws firmly.



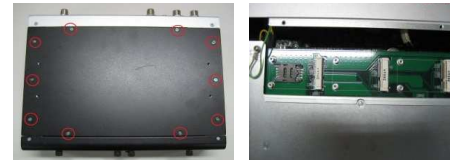
**Step 3** Insert the SATA drive and then the CFast into their slots respectively, as shown in the pictures



**Step 4** Secure CFast and SATA drive by fastening all of the screws tightly to complete the installation.

### Mini PCIe module and SIM card Installation

**Step 1** Make sure system power is off. Loosen the lateral cover screws to remove the cover as shown.



**Step 2** Install the SIM card or Mini PCIe module and fasten screws. Notice the signal support type of the mini card slot when installing the card. Fasten screws.

