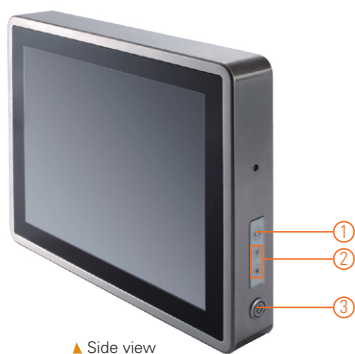


# GOT815L-511

15" XGA TFT IP66 & IP69K-rated Stainless Steel Fanless PCT (or Resistive Touch)  
Panel Computer with Intel® Core™ i5-7300U Processor and Flat Bezel Design (-20°C to +50°C)

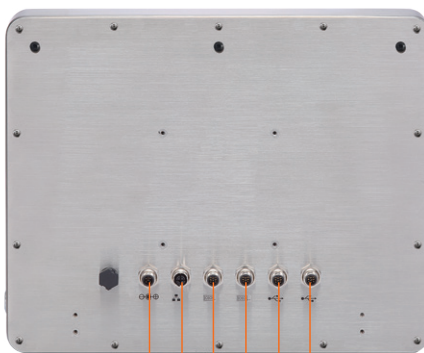
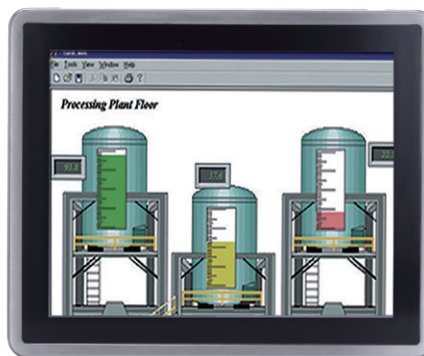
## Features

- 15" XGA TFT flat bezel LCD display
- IP66/IP69K-rated (NEMA 4X) water/dust/corrosion-proof design
- Full stainless steel enclosure with type 316
- -20°C to +50°C wide operating temperature range
- Fanless design with Intel® Core™ i5-7300U processor
- Optional Wi-Fi/3G kit for wireless network connectivity
- 9 to 36 VDC wide range power input
- Supports VESA mount
- M12 type connectors for harsh environments



▲ Side view

1. Backlight on/off
2. Brightness adjust +/-
3. Power on/off



4. DC power connector
5. 1 x LAN
6. 1 x RS-232/422/485 (default RS-232)
7. 1 x RS-232/422/485 (default RS-232)
8. 2 x USB 2.0
9. 2 x USB 2.0

## Introduction

The 15-inch GOT815L-511 is specially designed for food processing applications. Its IP66-rated stainless steel housing protects entire system from damage of water, powder and dust. It also supports a wide operating temperature range from -20°C to +50°C. Thus, this robust unit is specifically designed for high humidity, dusty or wet spaces in food factories or kitchens and more harsh applications.

### Full IP66 and IP69K Certified

The GOT815L-511 adopts a water/dust-proof housing design with five IP66-rated M12 I/O connectors and IP69K that ensures the product's ability to resist ingress of high temperature and high pressure water. It passed entire system IP66 test by SGS, and verified salt mist test. Additionally, it was tested by a spray nozzle with high temperature water (+80°C), a flow rate of 14 to 16 L/min and a nozzle hold with distance 10 to 15 cm away from the device at angles of 0°, 30°, 60° and 90° for 30 seconds. The GOT815L-511 is qualified to meet harsh environment applications.

### Wide Temperature (-20°C to +50°C) & Anti-vibration (1G) Design

The GOT815L-511 featuring fanless and noiseless design supports a wide operating temperature range from -20°C to +50°C. Besides, the patent of anti-vibration for SSD ensures system reliability and stability.

## Specifications

Enclosure	Stainless type 316
LCD Panel	Display Type 15" XGA TFT LCD
	Brightness (cd/m <sup>2</sup> ) 420 nits
	Resolution 1024 x 768
	Viewing Angle (H/V) 160°/160°
Main System	CPU Intel® Core™ i5-7300U 3.5 GHz (Kaby Lake)
	Chipset SoC integrated
	System Memory 1 x 260-pin DDR4-2133 SO-DIMM, up to 16GB
	BIOS AMI UEFI BIOS
	Storage 1 x 2.5" SSD HDD or 1 x 2.5" SATA HDD (9.5 mm height)
	Watchdog Timer 255 levels, 1 to 255 sec.
	Onboard Graphics Integrated in Intel® GFX

Specifications

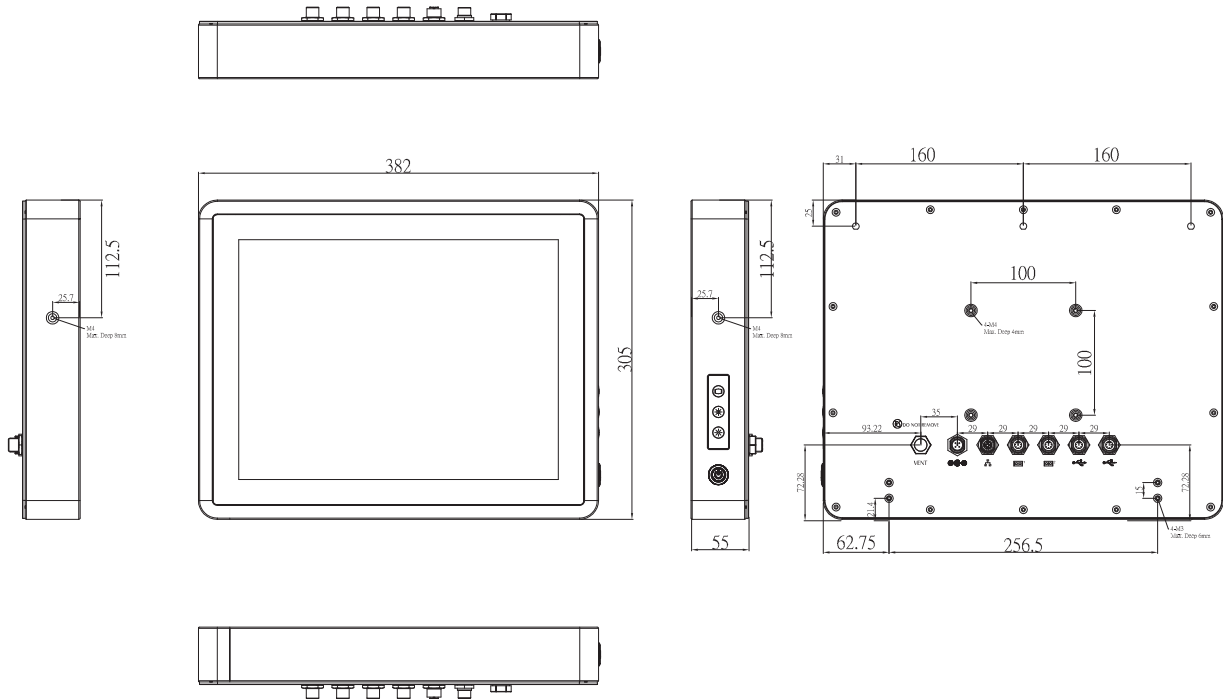
I/O Connector	2 x RS-232/422/485 (default RS-232, A-coded) 4 x USB 2.0 (A-coded) 1 x 10/100/1000 Mbps Ethernet with Intel® i210-IT (X-coded); support Wake-on-LAN, PXE Boot ROM 1 x DC power input (M12)
Expansion Interface	1 x Full-size PCI Express Mini Card slot 1 x Half-size PCI Express Mini Card slot
Touchscreen	5-wire resistive touch or projected capacitive multi-touch
Power Input	9 to 36 VDC
Power Consumption	45W
Dimensions	382 mm (15.4") (W) x 55 mm (2.17") (D) x 305 mm (12.01") (H)
Packing Dimensions	510 mm (20.07") (W) x 186 mm (7.32") (D) x 532 mm (20.94") (H)
Weight (net/gross)	5.2 kg (11.46 lb)/8.4 kg (18.5 lb)
Operating Temperature	-20°C to +50°C (-4°F to +122°F)
Relative Humidity	10% - 95% @ +40°C, non-condensing
Operation Vibration	1G, 5 - 500Hz, random for 2.5" SSD
Certifications	CE

\*W.T.: Wide temperature. All W.T. supported products have to be sorted by Axiomtek.

Packing List

1 x GOT815L-511
1 x DC cable

Dimensions



Ordering Information

GOT815L-511-C-DC (P/N: E22B815116)	15" XGA fanless IP66 & IP69K-rated stainless steel fanless touch panel computer with Intel® Core™ i5-7300U, projected capacitive touch screen, 420 nits LCD and 9 to 36 VDC power input
GOT815L-511-R-DC (P/N: E22B815113)	15" XGA fanless IP66 & IP69K-rated stainless steel fanless touch panel computer with Intel® Core™ i5-7300U, 5-wire flat resistive touch screen and 9 to 36 VDC power input

\* Other configuration by request  
\* Specification and certifications may vary based on different requirements

Optional Accessories

594B8122100E	Water-proof COM cable (1.8 m)
594B8152710E	Water-proof LAN cable (1.8 m)
594B8152820E	Water-proof USB cable (1.8 m)
50966224010E	Adapter 24V 90W, M12 A-code 5P FSP090AAAN3

Optional EOS Installation

Windows® 10 IoT

Optional OS Installation

Windows® 10