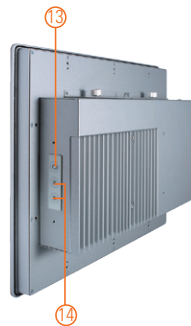
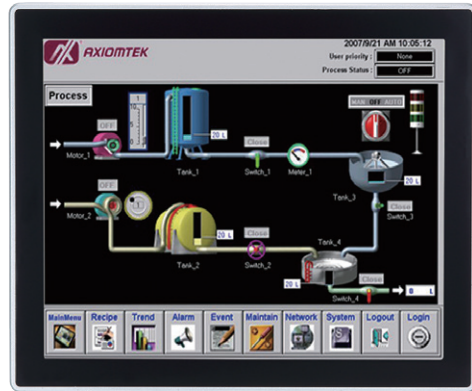


GOT3177T-311-FR

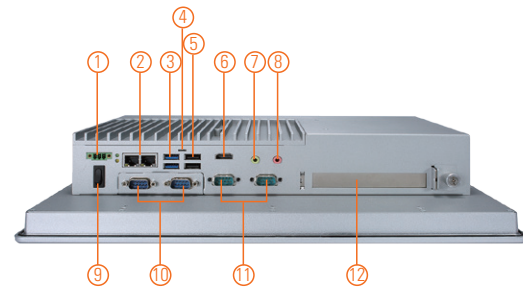
17" SXGA TFT Flat Bezel Expandable Touch Panel Computer with Intel® Pentium® Processor N4200

Features

- 17" SXGA TFT flat resistive touch
- Fanless and modularized design
- Intel® Pentium® processor N4200 (Apollo Lake-M)
- 2.5" 7/9.5 mm SATA HDD and mSATA
- WLAN module & antenna (optional)
- 2 GbE LAN, 2 USB 2.0, 2 USB 3.0 and 4 COM
- 1 PCIe riser card expansion slot (optional)
- IP65-rated front bezel
- Supports panel mount and VESA mount (VESA arm/desktop stand/wall mount optional)



▲ Rear view



1. Terminal block for DC power input
2. 2 x LAN
3. 2 x USB 3.0
4. AT/ATX selectable switch
5. 2 x USB 2.0
6. 1 x HDMI
7. 1 x Line-out
8. 1 x Mic-in
9. Power switch (ATX)
10. 2 x COM (cable)
11. 2 x COM (onboard)
12. 1 x PCIe riser card expansion slot (optional)
13. Backlight switch
14. Brightness adjust +/-



▲ Top view

Introduction

The GOT3177T-311-FR adopts a 17-inch SXGA LCD and supports Intel® Apollo Lake processor. By supporting a wide range operating temperature from 0°C to +60°C, it can be used in harsh environment. The rugged industrial panel PC supports low power Intel® Pentium® processor N4200. It also provides 2 PCI Express Mini Card slots for 3G, wireless network connectivity and 1 PCIe riser card slot (optional) for more expansions. The 17" flat front bezel touch panel computer is suitable for transportation, heavy-duty industry, smart factory automation, and oil pipe monitoring systems.

Wide Temperature Range

The Intel® Apollo Lake-based GOT3177T-311-FR has a wide operating temperature of 0°C to +60°C as we as fanless operation. It also has a compact design for space-constricting applications.

WLAN Antenna Supported (optional)

The GOT3177T-311-FR provides 2 PCI Express Mini Card slots and WLAN/3G antennas for wireless network connectivity.

Specifications

Front Bezel	IP65 front bezel	
LCD Panel	Display Type	17" SXGA TFT LCD
	Brightness (cd/m ²)	350 nits
	Resolution	1280 x 1024
Main System	CPU	Intel® Pentium® processor N4200 4C @ 1.1 GHz (Apollo Lake-M)
	Chipset	SoC Integrated
	System Memory	1 x 204-pin DDR3L-1333/1600 SO-DIMM, up to 8GB
	BIOS	AMI UEFI BIOS
	Storage	1 x 2.5" SATA HDD (9.5 mm height) 1 x mSATA
	Watchdog Timer	255 levels, 0 to 255 sec.
	Onboard Graphics	Integrated Intel® HD Graphics

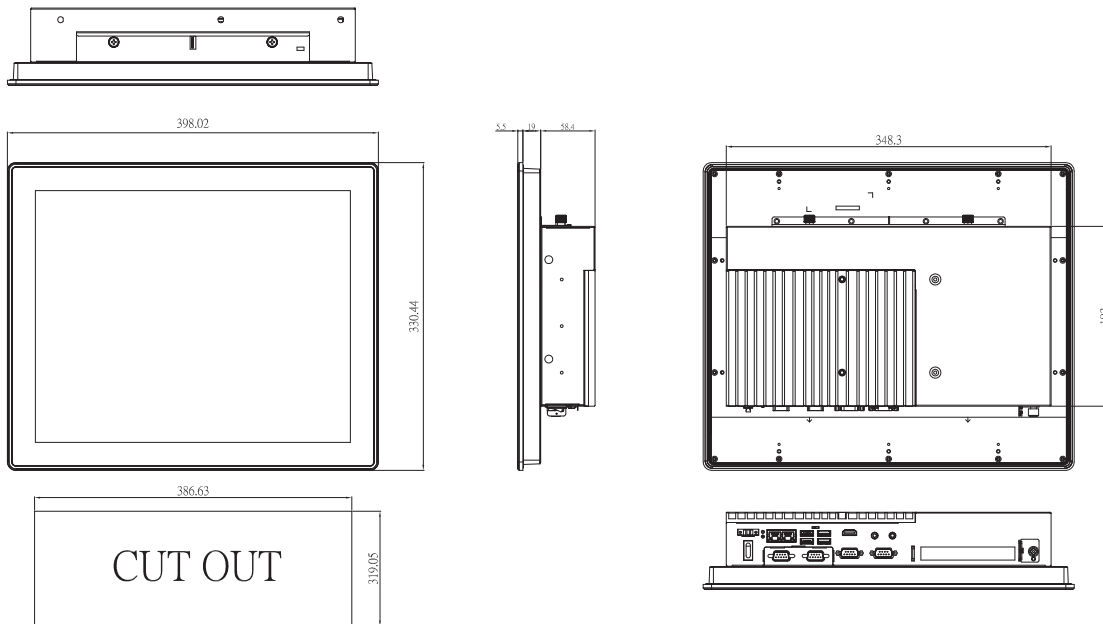
Specifications

I/O Connector	2 x RS-232 2 x RS-232/422/485 (default RS-232) 2 x Audio (Line-out/Mic-in) 2 x USB 2.0 2 x USB 3.0 2 x 10/100/1000 Mbps Ethernet (Intel® i210-IT)
TPM	fTPM (optional)
Expansion Interface	1 x Full-size PCI Express Mini Card slot with SIM 1 x Full-size PCI Express Mini Card slot with mSATA 1 x PCIe riser card slot (optional)
Touchscreen	Flat resistive touch
Power Supply	DC version: 9 to 36 VDC
Power Consumption	69W
Dimensions	398.02 mm (15.64") (W) x 59.9 mm (2.36") (D) x 330.44 mm (13.01") (H)
Packing Dimensions	510 mm (20.08") (W) x 190 mm (7.48") (D) x 540 mm (21.26") (H)
Weight (net/gross)	5.7 kg (12.6 lb) / 8.0 kg (17.6 lb)
Operating Temperature	0°C to +60°C (+32°F to +140°F)
Relative Humidity	20% to 90% @ +40°C; non-condensing
Operation Vibration	1.0G, 10 - 500Hz
Certificate	CE

Packing List

1 x GOT3177T-311-FR
1 x Phoenix connector
1 x Panel mount kit set

Dimensions



Ordering Information

GOT3177T-311-FR-DC	17" SXGA TFT fanless touch panel computer with Intel® Pentium® processor N4200 1.1 GHz quad core, 5-wire flat resistive touch screen and 9 to 36 VDC terminal block connector
--------------------	---

Optional Accessories

82231770050E	GOT3177T-834 wall mount kit
83907131000E	AX90713 GOT3177T-311 backplane (PCIe riser card)
50906D24000E	Adaptor 24V/120W, wire only, FSP120-AAAN3

Optional EOS Installation

Windows® 10 IoT Enterprise

Optional OS Installation

Windows® 10

