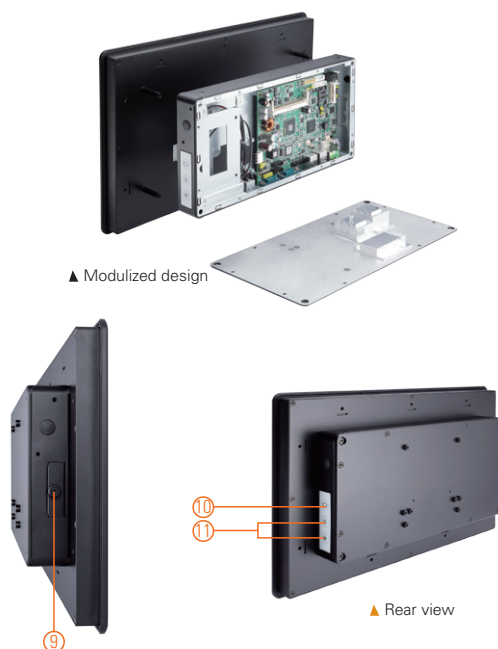


# GOT3157W-834-PCT

15.6" WXGA TFT Fanless Multi-touch Panel Computer with Intel® Celeron® Processor J1900 (-20°C to +50°C)

## Features

- 15.6" WXGA TFT with projected capacitive multi-touch
- Fanless design with Intel® Celeron® processor J1900 4C @ 2.0 GHz (Bay Trail)
- 2.5" SATA HDD & CFast™ or mSATA
- WLAN/3G module & antenna (optional)
- 2 GbE LAN, 2 USB 2.0, 2 USB 3.0 and 2 COM
- IP65 front bezel
- Supports panel mount and optional VESA arm/desktop stand/wall mount
- -20°C to +50°C wide operating temperature range
- Adjust RS-232/422/485 setting via BIOS



1. Power switch
2. Terminal block for DC power input
3. USB 2.0 x 2
4. COM 1 (RS-232/422/485)
5. COM 2 (RS-232/422/485)
6. Ethernet x 2
7. USB 3.0 x 2
8. Audio (Line-out)
9. CFAST™ slot
10. Backlight switch
11. Brightness adjustment



## Introduction

The GOT3157W-834-PCT adopts a 15.6-inch WXGA LCD and supports Intel® Bay Trail-D processor. By supporting a wide range operating temperature from -20°C to +50°C, it can be used in harsh environment. The rugged industrial panel PC supports low power Intel® Celeron® processor J1900. It also provides two PCI Express Mini Card slots for 3G, wireless network connectivity. This 15.6" multi-touch panel computer is suitable for transportation, heavy-duty industry, smart factory automation, and oil pipe monitoring systems.

### Wide Temperature Range

The Intel® Bay Trail-based GOT3157W-834-PCT applies unique extended temperature technology with wide temperature range support as well as fanless operation. It also has a compact design for harsh environment.

### WLAN Antenna Supported (optional)

The 15.6" WXGA IP65 industrial panel PC, GOT3157W-834-PCT, provides two PCI Express Mini Card slots and WLAN antennas for 3G and wireless network connectivity.

## Specifications

|             |                                 |  |
|-------------|---------------------------------|--|
| Front Bezel | IP65 front bezel                |  |
| LCD Panel   | Display Type                    | 15.6" WXGA TFT LCD                                       |
|             | Brightness (cd/m <sup>2</sup> ) | 400 nits   |
|             | Resolution                      | 1366 x 768   |
| Main System | CPU                             | Intel® Bay Trail-D Celeron® processor J1900 4C @ 2.0 GHz |
|             | Chipset                         | SoC Integrated   |
|             | System Memory                   | 1 x 204-pin DDR3L-1333/1600 SO-DIMM, up to 8GB           |
|             | BIOS                            | AMI UEFI BIOS  |
|             | Storage                         | 1 x 2.5" SATA HDD<br>1 x CFAST™ or 1 x mSATA             |
|             | Watchdog Timer                  | 255 levels, 0 to 255 sec.                                |
|             | Onboard Graphics                | Integrated Intel® HD Graphics                            |
|             |                                 |  |

## Specifications

|                     |   |
|---------------------|---|
| I/O Connector       | 2 x RS-232/422/485 (COM 1/2)<br>1 x switch for power on/off (ATX)<br>1 x audio (Line-out)<br>2 x USB 3.0<br>2 x USB 2.0<br>2 x 10/100/1000 Mbps Ethernet (Intel® i210-IT)         |
| TPM                 | N/A   |
| Expansion Interface | 2 x PCI Express Mini Card slot  |
| Touchscreen         | Projected Capacitive multi-touch  |
| Power Supply        | 1. DC version: 9 to 36 VDC<br>2. AC version: 12 VDC with adapter  |
| Power Consumption   | 45 W  |
| Dimensions          | 396 mm (15.6") (W) x 53.9 mm (2.12") (D)<br>x 247.1 mm (9.73") (H)  |
| Packing Dimensions  | 525 mm (20.67") (W) x 470 mm (18.51") (D) x 186 mm (7.32") (H)  |
| Weight (net/gross)  | 5.0 kg (11.02 lb)/7.0 kg (15.43 lb)   |
| Environment         | Operating temperature: -20°C to +50°C (-4°F to +122°F)<br>Relative humidity: 20% to 90% @ +40°C; non-condensing<br>Operation vibration: 2G, 10 to 500Hz, random for CompactFlash™ |
| Certificate         | CE  |

## Packing List

1 x GOT3157W-834-PCT  
1 x Adapter(GOT3157W-834-PCT-J)  
1 x Phoenix connector(GOT3157W-834-PCT-DC 9 ~ 36 VDC)  
1 x Panel mount kit

## Ordering Information

|                     |   |
|---------------------|---|
| GOT3157W-834-PCT-J  | 15.6" WXGA TFT fanless touch panel computer with Intel® Celeron® J1900 2.0 GHz quad core processor, projected capacitive multi-touch screen and AC-DC 12 VDC power adapter (screw type connector) |
| GOT3157W-834-PCT-DC | 15.6" WXGA TFT fanless touch panel computer with Intel® Celeron® J1900 2.0 GHz quad core processor, projected capacitive multi-touch screen and 9 to 36 VDC terminal block connector              |

## Optional Accessories

|              |  |
|--------------|--|
| Wi-Fi        |  |
| 4G           |  |
| 82231770050E | GOT3177T-834 wall mount kit                              |
| 50906D24000E | Adaptor 24V/120W, wire only, FSP120-AAAN3 (for DC model) |

## Optional EOS Installation

WES7  
WE8S  
Windows® 10 IoT Enterprise

## Optional OS Installation

Windows® 8.1  
Windows® 7  
Windows® 10

## Dimensions

