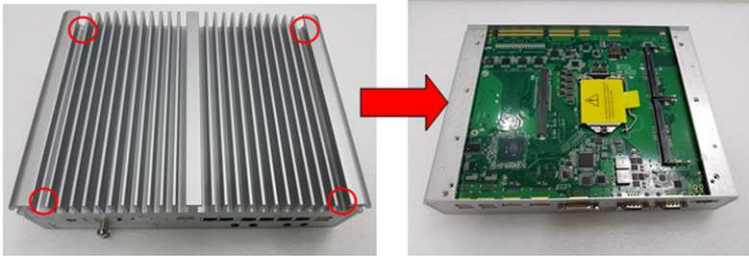


Installation of SO-DIMM Memory

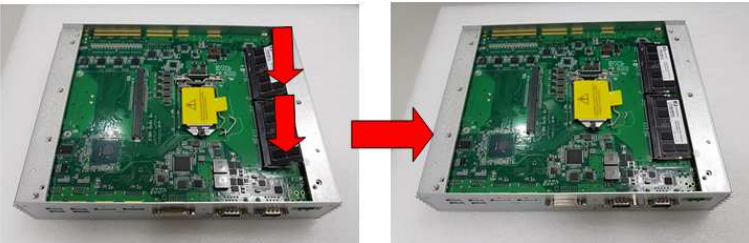
Step 1 Turn off the system, and unplug the power adaptor.

Step 2 Loosen four screws on the top heatsink are used to fasten the heatsink to the chassis.



Step 3 Located the dual SO-DIMM sockets on main board.

Step 4 Locate the memory module, insert a gold colored contact into the socket and push the module two end latches till locked.



Step 5 Put the top cover back and fasten four screws back onto the system.

Note: Please refer to the user's manual to get more detail information.

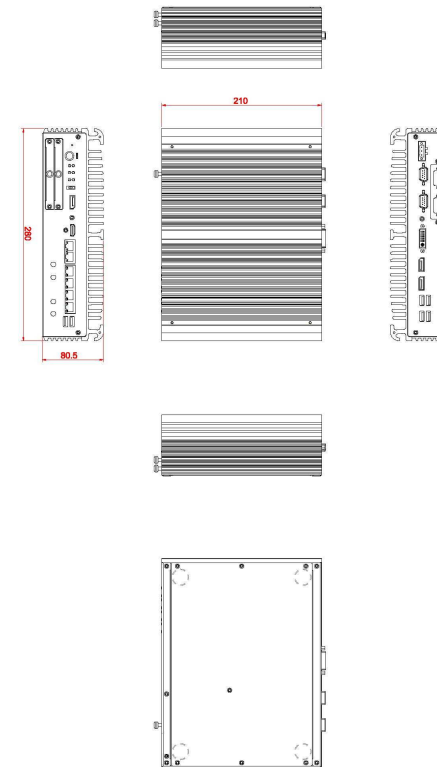
eBOX671-521-FL Quick Installation Guide

Packing List

System Unit x 1	Terminal Block x 1
Quick Installation Guide x 1	Remote switch cable x 1
DVD/CD x 1 (for Driver & Manual)	Foot Pad x 4
Thermal Grease x 1	Screw Pack x 1

➤ Do not try to apply power to the system if any damaged components.

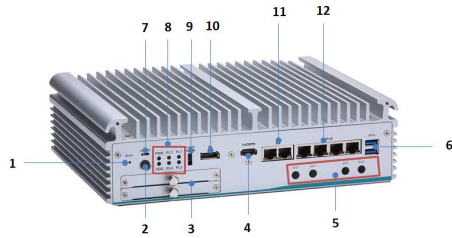
Dimensions



I/O Outlets

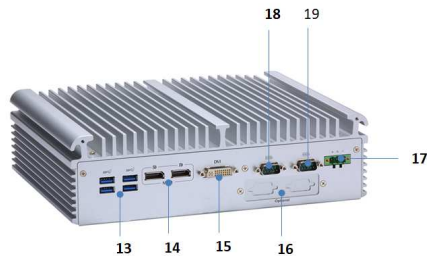
The following figures show I/O outlets on the eBOX671-521-FL.

Front View



1	1 x Reset button	7	1 x AT/ATX quick switch
2	1 x Power button	8	System LEDs
3	2 x Swappable HDD tray	9	1 x Remote power switch
4	1 x HDMI 1.4	10	1 x DisplayPort 1.2
5	4 x Antenna opening	11	2 x GbE
6	2 x USB 3.1 (Gen1)	12	4 x PoE

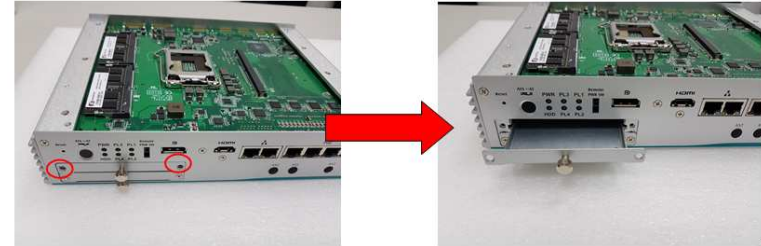
Rear View



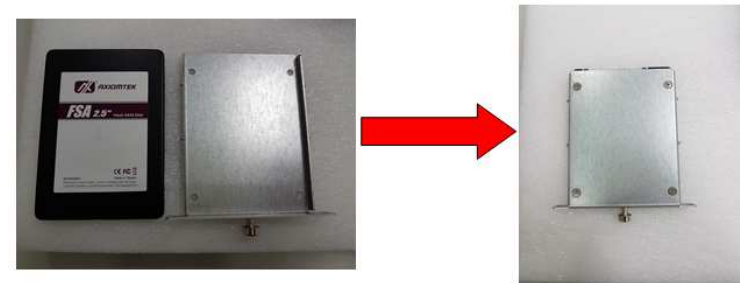
13	4 x USB 3.1 (Gen2)	17	24VDC power input
14	2 x DisplayPort via MXM	18	COM2 (RS232/422/485)
15	1 x DVI-I	19	COM1 (RS232/422/485)
16	Flexible I/O Window		

Installation of Hard Disk Drive

- Step 1 Turn off the system, and unplug the power adaptor.
 Step 2 Loosen two of the SATA drive tray's screws and extract the SATA HDD drive bay.



- Step 3 Turn the SATA drive tray upside down to install SSD/HDD and then fasten the four HDD screws to secure the SATA drive tray.



- Step 4 Slide the SATA drive tray back into the system and fasten the screws firmly to complete the installation.

