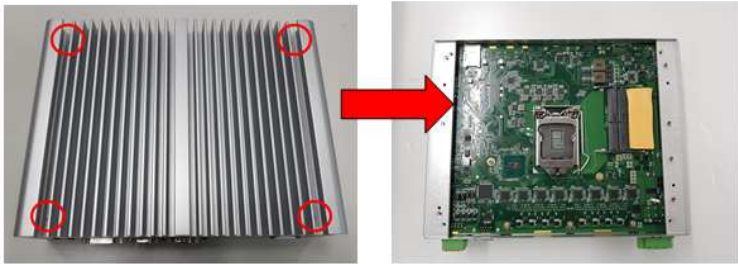


Installing the Processor & SO-DIMM

Step 1 Turn off the system and unplug the power-cord.

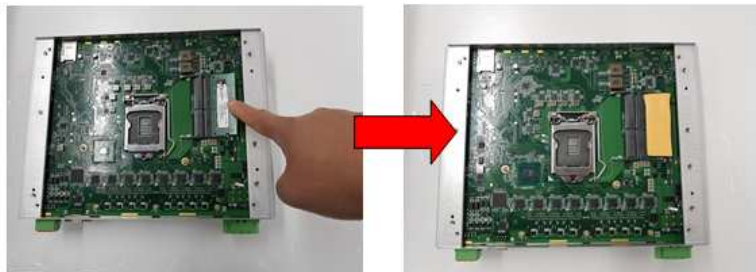
Step 2 Loosen four screws to remove the top heatsink.



Step 3 Loosen these screws to remove the top heatsink then you can find LGA socket of CPU and dual SO-DIMM sockets on board.

Step 4 Locate the memory module, insert the gold colored contact into the socket, and push the module down, until it is firmly seated by locking two latches on the sides. Besides, users also can follow user's manual to install 35 / 65 watt processor.

※Please notice that our SO-DIMM socket already installed thermal pad on bottom side to be our standard, users must to remove the mylar of thermal pad then install the corresponding DRAM into the socket, then refer to above step to paste top thermal pad (Dimension: 3T, from accessory pack) to complete the DRAM installation.



Step 5 Assemble top heatsink with chassis through 4 screws carefully to complete Processor / SO-DIMM installation.

Note: Please be informed that you can get more detail information in eBOX671-517-FL's user's manual.

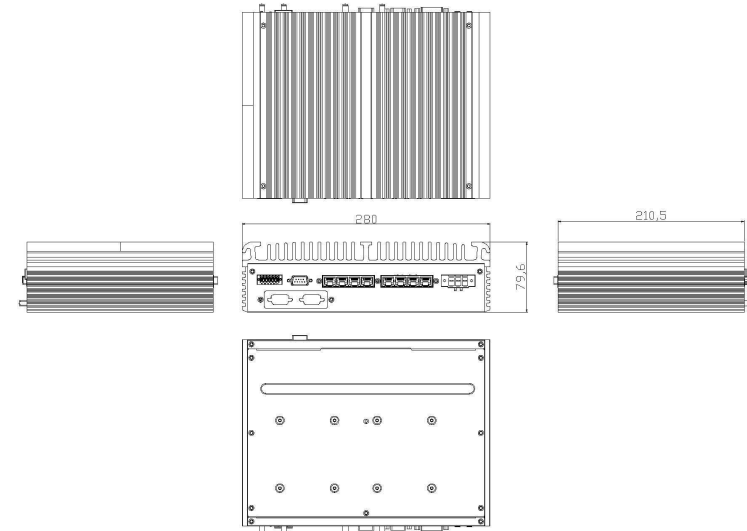
eBOX671-517-FL Quick Installation Guide

Packing List

✓ System Unit x 1	✓ Foot Pad x 4
✓ Quick Installation Guide x 1	✓ CPU Grease x1
✓ DVD/CD x 1 (Driver & Manual)	✓ DRAM Thermal Pad (3T) x 2
✓ Terminal Block (3P) x1	✓ Optional Flexible I/O Window Kits
✓ DIO Connector x 1	✓ Optional WIFI / 3G / LTE Modules
✓ Screw Pack x 1	✓ Optional Mounting Kit

➤ Do not try to apply power to the system if any damaged components.

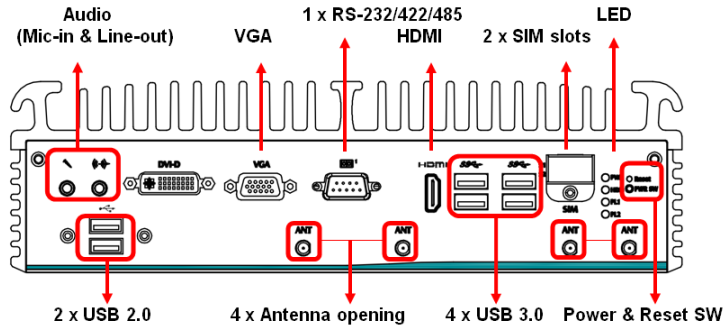
Dimensions



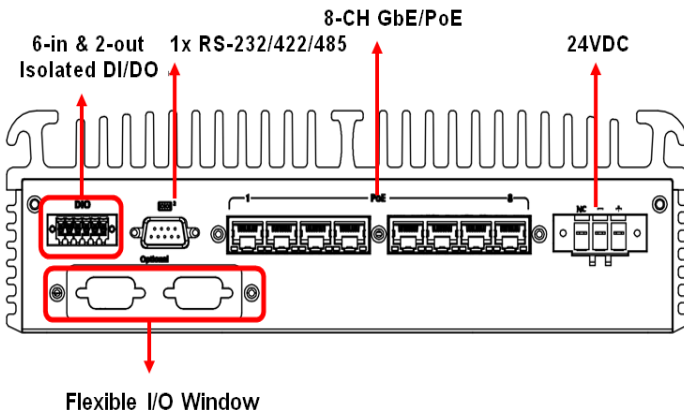
I/O Outlets

The following figures show you I/O outlets on front and rear panels of the eBOX671-517-FL Series.

Front View

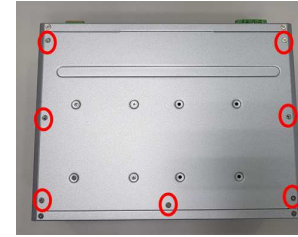


Rear View

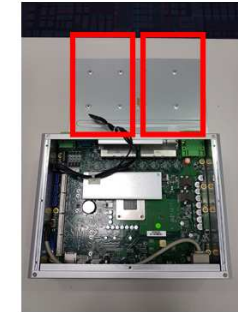


Installation of Hard Disk Drive

- Step 1 Turn off the system, and unplug the power adaptor.
- Step 2 Turn the system upside down to locate screws at the bottom, and then loosen all screws.



- Step 3 Open the bottom cover.
- Step 4 Locate SSD/HDD within the red line as marked. Please notice the direction of connector for HDD.



- Step 5 Assemble the SSD/HDD with the four HDD mounting screws. Make sure the PCB side of the SSD/HDD will be facing the bottom cover and connected the SATA power cable.



- Step 6 Put the bottom cover and fasten all the screws back onto the system.

©Copyright 2019 Axiomtek Co., Ltd.
Version A1 April 2019
Printed in Taiwan
9416K671030E