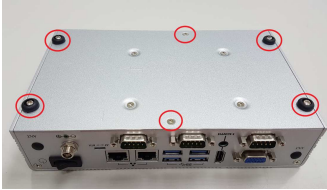


# eBOX625-312-FL Quick Installation Guide

## Installing of the Memory Module

**Step 1** Turn off the system, and unplug the power cord.

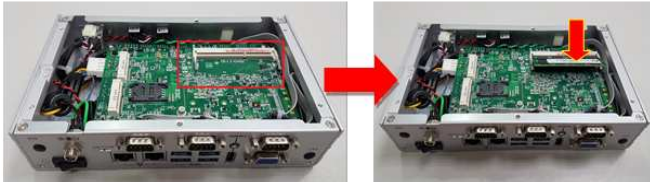
**Step 2** Turn the system upside down to locate screws at the side of the system, and then loosen two screws and four foot pads.



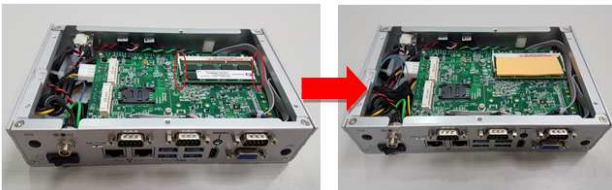
**Step 3** Remove both of the bottom cover.




**Step 4** Locate the DDR3L SO-DIMM slot, holding the DDR3L SO-DIMM at a 30 degree angle up from horizontal; slowly insert the golden fingers into the DDR3L SO-DIMM slot until it is fully inserted in.



**Step 5** Press it down gently, until it is firmly seated by locking two latches on the sides and place the thermal pad on the DRAM.



**Step 6** Put the bottom cover back and fasten all screws.

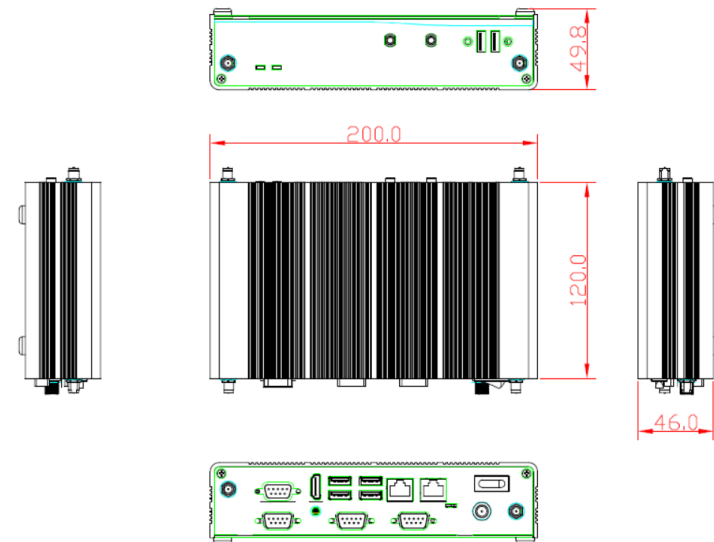
 **Note:** Please be informed that you can get more detail information in eBOX625-312-FL user's manual.

## Packing List

System Unit x 1	DRAM Thermal Pad x 1
Quick Installation Guide x 1	HDMI Cable Locking Clip (Optional)
DVD/CD x 1	12V/60W power adapter (Optional)
Screws Pack x 1	Power cord (Optional)
Pre-installed Foot Pad x 4	

➤ Do not try to apply power to the system if any damaged components.

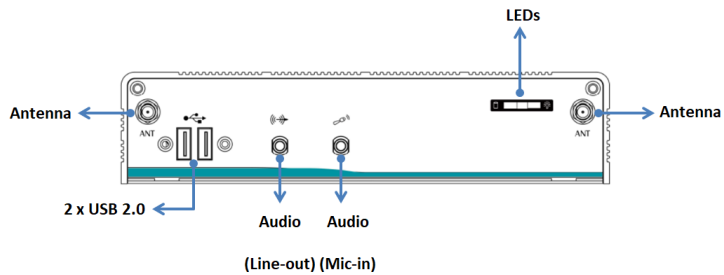
## Dimensions



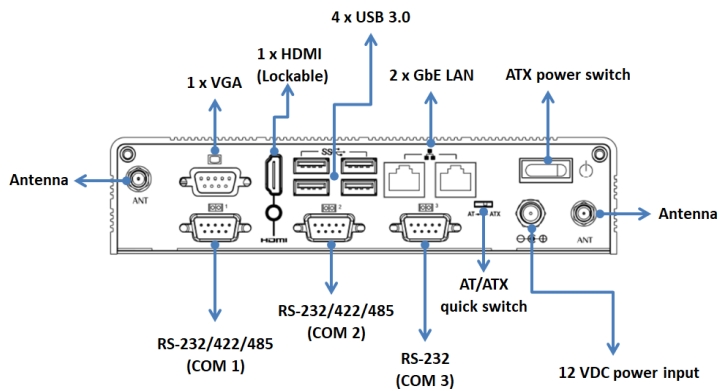
## I/O Outlets

The following figures show you I/O outlets on front and rear panels of the eBOX625-312-FL Series.

### ➤ Front View



### ➤ Rear View



## Installing of the 2.5" SATA Device

**Step 1** Turn off the system, and unplug the power cord.

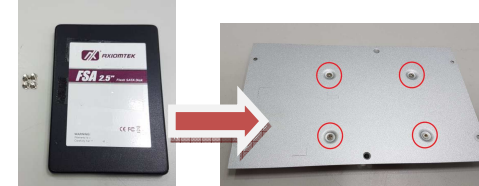
**Step 2** Turn the system upside down to locate screws at the side of the system, and then loosen two screws and four foot pads.



**Step 3** Remove the bottom cover.



**Step 4** Please prepare HDD/SSD and four M3\*4L screws and then assembly the HDD/SSD with the bracket.



**Step 5** Connect the power and SATA cable directly and then make sure the insertion is complete.



**Note:** Please notice the direction of connector for HDD/SSD.

**Step 6** Put the bottom cover back and fasten all screws.