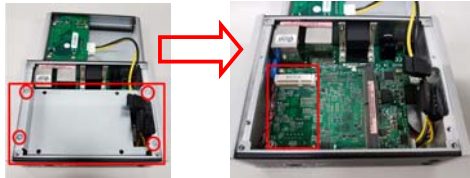


Installation of Express Mini Card

- Step 1** Turn off the system, and unplug the power adaptor.
Step 2 Turn the system upside down to locate screws at the bottom, and then loosen all screws.



- Step 3** Loosen the screws to remove SSD/HDD bracket and then located the Mini PCIe slot.



- Step 4** Please follow your requirement to connect PCI Express Mini Card module, EX: WIFI, mSATA and GPS.



- Step 5** Slide Mini Card into Mini Card slot with caution, and fasten screw of Express Mini Card.



- Step 6** Assembly the bottom cover back and fasten all screws.
Note: Please refer to the user's manual to get more detail information.

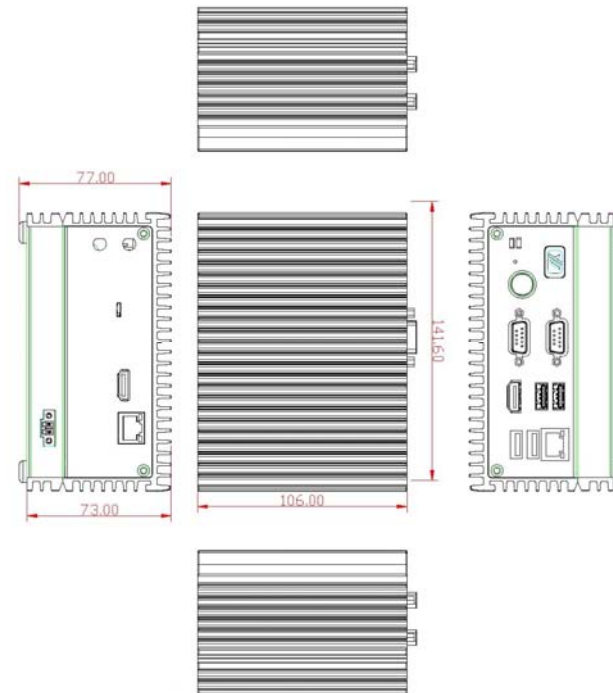
eBOX565-500-FL Quick Installation Guide

Packing List

System Unit x 1	DVD/CD x 1 (for Driver & Manual)
Quick Installation Guide x 1	2-pin Terminal block x 1
Pre-installed Foot pad x 4	Screw pack x 1

- Do not try to apply power to the system if any damaged components.

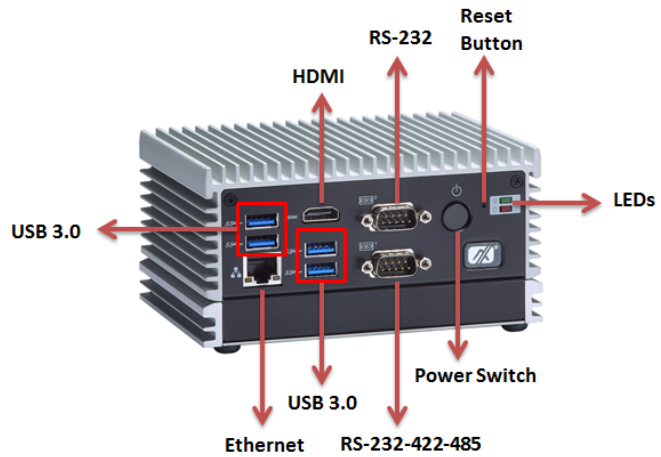
Dimensions



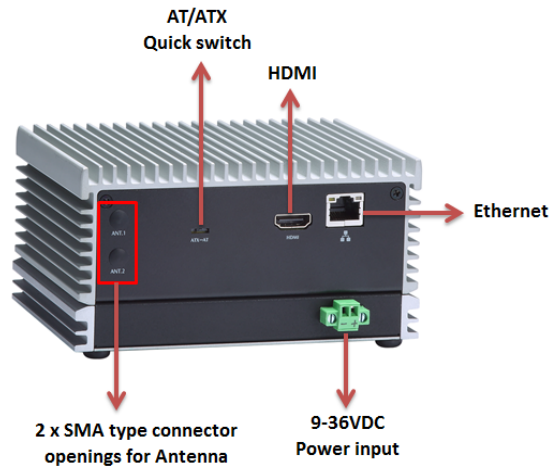
I/O Outlets

The following figures show I/O outlets on the eBOX565-500-FL.

➤ Front View



➤ Rear View



Installation of Hard Disk Drive

- Step 1 Turn off the system, and unplug the power adaptor.
- Step 2 Turn the system upside down to locate screws at the bottom, and then loosen all screws.



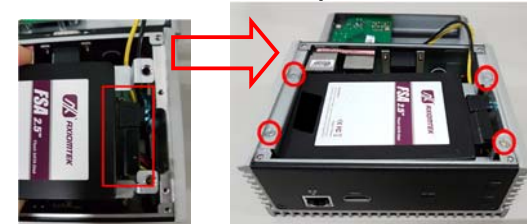
- Step 3 Open the bottom cover.
- Step 4 Locate SSD/HDD within the red line marked.



- Step 5 Please prepare the following items to assemble SSD/HDD.



- Step 6 Connected the SATA cable and Power cable and Fasten screws of HDD bracket to complete the SSD/HDD installation.



- Step 7 Recover and fasten all screws of the bottom cover.