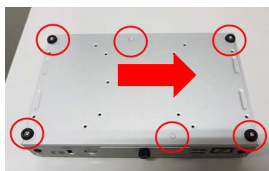


Installation of SO-DIMM Memory

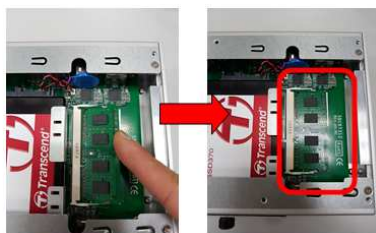
- Step 1** Turn off the system, and unplug the power adaptor.
Step 2 Turn the system upside down to locate screws at the bottom, and then loosen all screws.



- Step 3** Located the SO-DIMM socket on main board.



- Step 4** Locate the memory module, insert a gold colored contact into the socket and push the module two end latches till locked.



Note: Please refer to the user's manual to get more detail information.

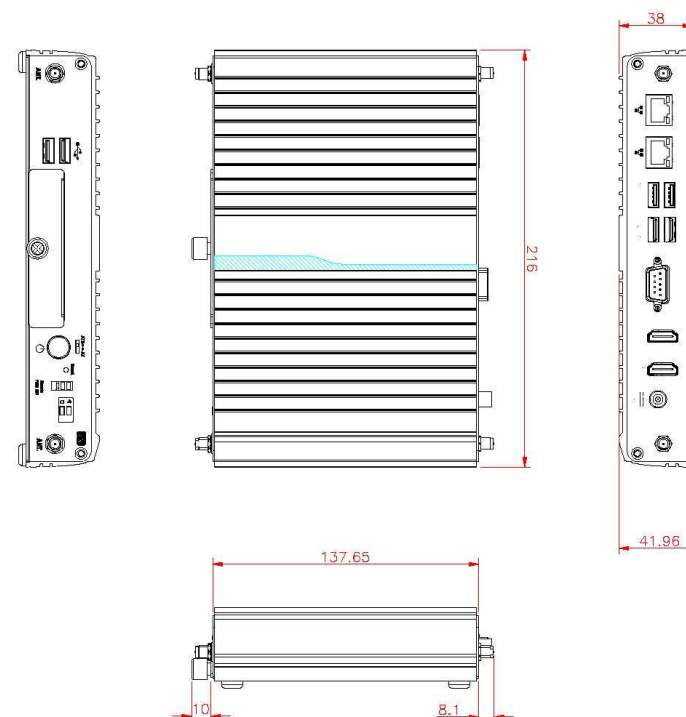
eBOX100-312-FL Quick Installation Guide

Packing List

System Unit x 1	DVD/CD x 1 (for Driver & Manual)
Quick Installation Guide x 1	HDD Rubber x 1
US power cord x 1 or EU power cord x 1	36W power adapter x 1
Foot pad x 4 (pre-install)	

- Do not try to apply power to the system if any damaged components.

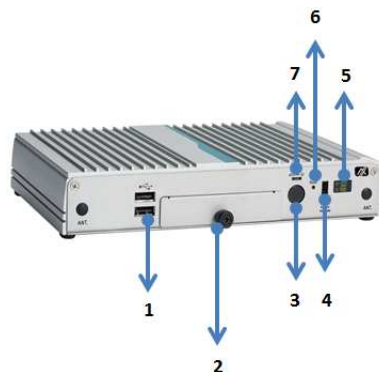
Dimensions



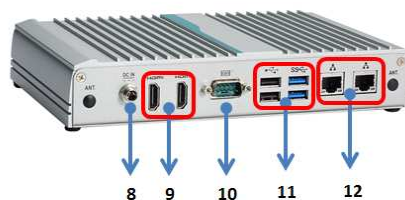
I/O Outlets

The following figures show I/O outlets on the eBOX100-312-FL.

➤ Front View



➤ Rear View



1	2 x USB 2.0	7	ATX/AT quick switch
2	1 x swappable HDD drive bay	8	12VDC power input
3	1 x Power button	9	2 x HDMI
4	1 x Remote PWR switch	10	1 x Serial port
5	2 x LEDs for HDD and Power	11	2 x USB 2.0 2 x USB 3.0
6	1 x Reset switch	12	2 x GbE LAN Port

Installation of Hard Disk Drive

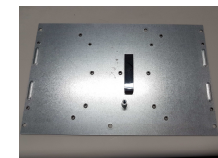
Step 1 Turn off the system, and unplug the power adaptor.

Step 2 Turn the system upside down to locate screws at the bottom, and then loosen all screws.



Step 3 Open the bottom cover.

※ Put the HDD rubber on bottom cover when customer uses the 7.5 mm thick SSD.



Step 4 Locate SSD/HDD within the red line as marked.



Step 5 Before assemble the SSD/HDD, please loosen the thumb screw to remove the HDD bracket, and then assemble the SSD/HDD with the one HDD mounting screw.



Step 6 Put the bottom cover back and fasten all the screws.

Step 7 Turn the system up and then connected the SSD/HDD directly and make sure the insertion is complete.

