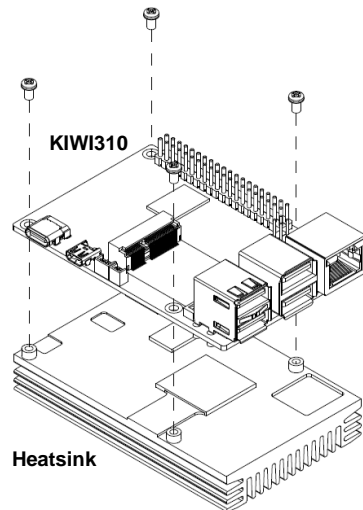


## Quick Start

The basic procedures required to power on KIWI310:

- (1). Assemble thermal solution with KIWI310 properly as indicated in image below.



- (2). Check all switch settings and make sure they are at default settings; especially the Auto Power On setting on KIWI310 board must be enabled (SW1-1 ON).
- (3). Make sure that all necessary peripheral devices are plugged properly
- (4). Firmly insert USB type C power adapter or power bank into connector CN7. The power requirement:
  - For 9V input voltage, the minimum current requirement is 1.1A.
  - For 20V input voltage, the minimum current requirement is 0.5A.
- (5). Power on the system by inserting power plug.

## KIWI310 Quick Installation Guide

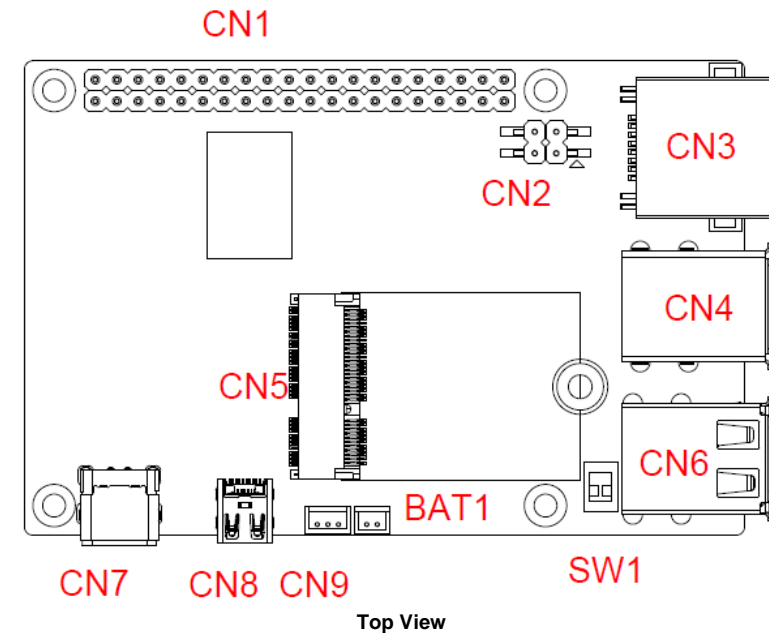
### Checklist

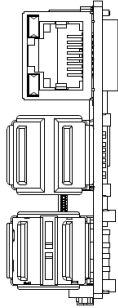
✓ 1.8" Board x1

✓ Heatsink x1

**Note:** Please contact your local vendors if any damaged or missing items. DO NOT apply power to the board if there is any damaged component.

### Board Layout





Side View

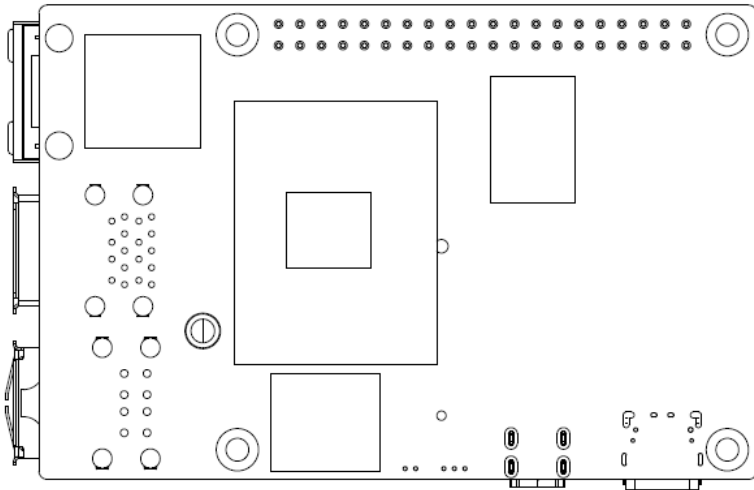
## Switch Settings

Before applying power to the KIWI310, please make sure all switches are in factory default position.

Switch	Description	Setting
SW1	Auto Power On Default: Enable	SW1-1 ON
	Restore BIOS Optimal Defaults Default: Normal Operation	SW1-2 OFF

## Connectors

Connector	Description
CN1	40-pin GPIO Header
CN2	POE Header
CN3	Ethernet Port
CN4	USB 3.2 Port 1 and 2
CN5	M.2 2230 Key E Connector
CN6	USB 2.0 Port 1 and 2
CN7	Power Connector
CN8	Micro HDMI Connector
CN9	Power and Reset Button
BAT1	CMOS Battery Connector



Bottom View