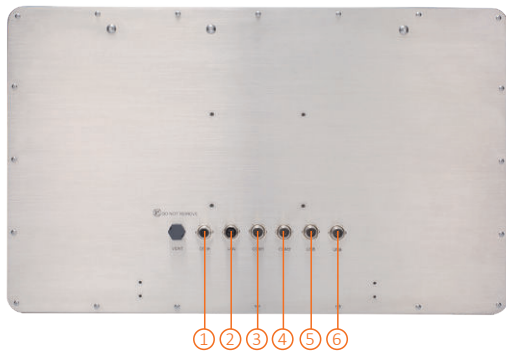
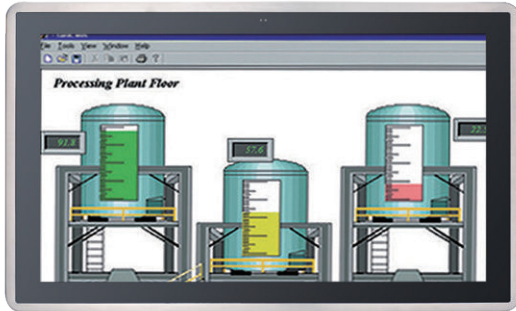


# GOT821A-TGL-WCD

21.5" FHD TFT IP66 & IP69K-rated Stainless Steel Fanless PCT Panel Computer with Intel® Core™ i5-1145G7E or Celeron® 6305E Processor and Flat Bezel Design (-20°C to +50°C)



- |  |  |
|--|--|
| 1. DC power connector                  | 6. 2 x USB 2.0                             |
| 2. 1 x 2.5GbE LAN                      | 7. Backlight on/off                        |
| 3. 1 x RS-232/422/485 (default RS-232) | 8. Brightness settings +/-                 |
| 4. 1 x RS-232/422/485 (default RS-232) | 9. Power on/off                            |
| 5. 2 x USB 2.0                         | 10. Proximity and light sensors (optional) |

## Features

- 21.5" FHD TFT flat bezel LCD display
- IP66/IP69K-rated (NEMA 4X) water/dust/corrosion-proof design
- Full stainless-steel enclosure with SUS 304
- -20°C to +50°C wide operating temperature range
- Fanless design with Intel® Core™ i5-1145G7E processor
- Wi-Fi kit for wireless network connectivity (optional)
- 12 to 24 VDC wide range power input
- Supports VESA mount
- M12 type connectors for harsh environments



▲ Side view

## Introduction

The 21.5-inch GOT821A-TGL-WCD is specially designed for food processing applications. Its IP66-rated stainless steel housing protects entire system from damage of water, powder and dust. It also supports a wide operating temperature range from -20°C to +50°C. Thus, this robust unit is specifically designed for high humidity, dusty or wet spaces in food factories or kitchens and more harsh applications.

### Full IP66 and IP69K Certified

The GOT821A-TGL-WCD adopts a water/dust-proof housing design with five IP66-rated M12 I/O connectors and IP69K that ensures the product's ability to resist ingress of high temperature and high pressure water. It passed entire system IP66 test by SGS, and verified salt mist test. Additionally, it was tested by a spray nozzle with high temperature water (+80°C), a flow rate of 14 to 16 L/min and a nozzle hold with distance 10 to 15 cm away from the device at angles of 0°, 30°, 60° and 90° for 30 seconds. The GOT821A-TGL-WCD is qualified to meet harsh-environment applications.

### Wide Temperature (-20°C to +50°C) & Anti-vibration (1G) Design

The GOT821A-TGL-WCD featuring fanless and noiseless design supports a wide operating temperature range from -20°C to +50°C. Besides, the patent of anti-vibration for SSD ensures reliability and stability.

## Specifications

Enclosure	Stainless steel (SUS) 304 or 316 (optional)	
LCD Panel	Display Type	21.5" FHD TFT LCD
	Brightness (cd/m <sup>2</sup> )	400 nits
	Resolution	1920 x 1080
	Viewing Angle (H/V)	160°/140°
Main System	CPU	Intel® Core™ i5-1145G7E 2.6 GHz or Celeron® 6305E (Tiger Lake)
	Chipset	SoC integrated
	TPM	TPM 2.0 onboard
	System Memory	1 x 260-pin DDR4-3200 SO-DIMM, up to 32GB
	BIOS	AMI UEFI BIOS
	Storage	1 x 2.5" SATA SSD/HDD (9.5mm height)
	Watchdog Timer	255 levels, 1 to 255 sec.
	Onboard Graphics	Integrated with Intel® Iris® Xe Graphics
I/O Connector	2 x RS-232/422/485 (default RS-232, A-coded)	
	4 x USB 2.0 (A-coded)	
	1 x 2.5GBASE-T Ethernet with Intel® I225 (TSN and X-Coded) in support of Wake-on-LAN and PXE Boot ROM	
	1 x DC power connector (M12)	
Expansion Interface	1 x M.2 Key E slot (with PCIe x1 and USB 2.0 supported), dimensions: 22 x 30 mm	
Touchscreen	Projected capacitive multi-touch	
Power Input	12 to 24 VDC	
Power Consumption	78.7W	
Dimensions	552 mm (21.73") (W) x 55 mm (2.2") (D) x 338.4 mm (13.33") (H)	
Packing Dimensions	720 mm (28.35") (W) x 205 mm (8.07") (D) x 540 mm (21.26") (H)	
Weight (net/gross)	9.0 kg (19.84 lb) /12 kg (26.46 lb)	
Operating Temperature	-20°C to +50°C (-4°F to +122°F)	
Relative Humidity	10% - 95% @ +40°C, non-condensing	
Operation Vibration	1G, 5 - 500Hz, random for 2.5" SSD	
Certifications	CE, EN 61000-6-2, EN 61000-6-4, and FCC Class A	
	C1D2 (optional)	

\*W.T.: Wide temperature. All W.T. supported products have to be sorted by Axiomtek.

## Ordering Information

GOT821A-TGL-WCD (P/N: E22B821A00)	21.5" FHD fanless IP66 & IP69K-rated stainless steel touch panel computer with Intel® Core™ i5-1145G7E, projected capacitive touch screen, 400 nits LCD, and 12 to 24 VDC power input
--------------------------------------	---

\* Other configuration by request

\* Specification and certifications may vary based on different requirements

## Packing List

1 x GOT821A-TGL-WCD
1 x DC cable

## Optional Accessories

594B8122100E	Water-proof COM cable (1.8 m)
594B7102700E	Water-proof LAN cable (1.8 m)
594B8152820E	Water-proof USB cable (1.8 m)
50966224010E	Adapter 24V 90W, M12 A-code 5P FSP090AAAN3

## Optional EOS Installation

Windows® 10 IoT, Windows® 11 IoT

## Optional OS Installation

Windows® 10, Windows® 11

## Dimensions

