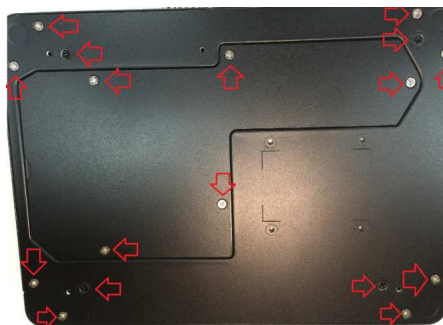
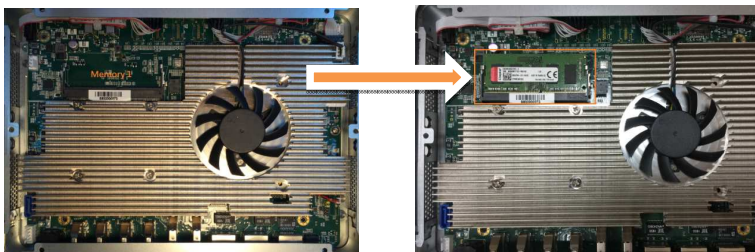


## Installing SO-DIMM1 memory module

- Step 1** Turn off the system and unplug the power cord.  
**Step 2** Turn the system upside down to locate screws at the bottom and then loosen all screws.



- Step 3** Open the door at bottom and top cover.  
**Step 4** The DIMM1 socket is located on the top side of the mainboard.  
**Step 5** Insert the memory module by pushing its gold colored contact into the socket until the socket's two end latches locked.



- Step 6** Put the bottom & top cover and fasten all screws back onto the system.

➤ Please refer to the user's manual to get more detail information.

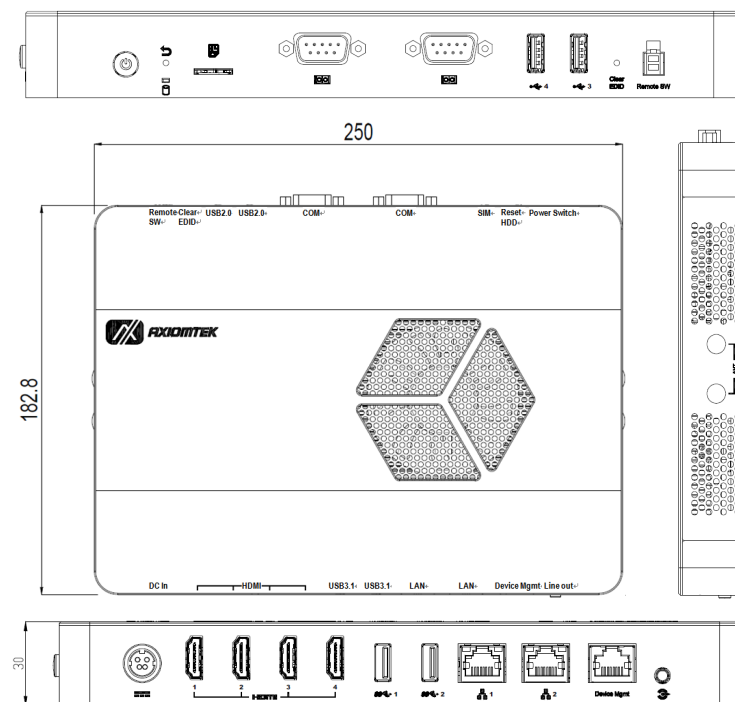
## DSP600-211 Series Quick Installation Guide

### Packing List

- |   |   |
|---|---|
| ✓ System Unit x1                          | ✓ DDR4 SO-DIMM Memory (Optional)        |
| ✓ Quick Installation Guide x1             | ✓ Antenna (Optional)                    |
| ✓ US Power Cord x1 or<br>EU Power Cord x1 | ✓ M.2 2230 WiFi/BT module<br>(Optional) |
| ✓ 84W Adapter x1                          | ✓ M.2 3042 LTE module (Optional)        |
| ✓ Foot Pad x4                             | ✓ M.2 2280 SSD (Optional)               |
| ✓ Wall Mount Kits x1 (Optional)           | ✓ Remote Switch Cable (Optional)        |
| ✓ VESA Mount Kits x1<br>(Optional)        |   |

➤ Do not try to apply power to the system if there is any damaged components.

### Dimensions



9412K60000E  
 ©Copyright 2020 Axiomtek Co., Ltd.  
 Version A1 March 2020  
 Printed in Taiwan

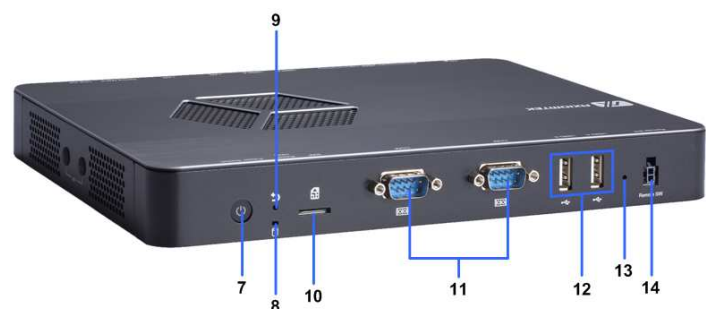
## I/O Outlets

The following figures show I/O outlets on the DSP600-211.

### ➤ Front View



### ➤ Rear View

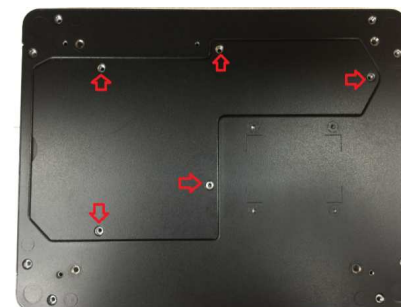


1	12VDC power input	8	HDD LED
2	4 x HDMI 2.0	9	Reset LED
3	2 x USB 3.1	10	SIM slot
4	2 x GbE LAN ports	11	2 x RS-232
5	Device management	12	2 x USB 2.0
6	Line-out	13	Clear EDID*
7	Power button	14	Remote power button

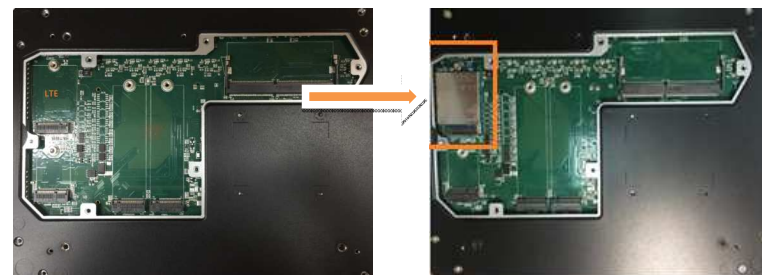
\* Press the Clear EDID button for 2 seconds, the system will erase the data of EDID and refresh EDID data.

## Installing M.2 Key B for 4G/LTE device

- Step 1** Turn off the system and unplug the power cord.  
**Step 2** Turn the system upside down to locate screws at the bottom and then loosen five screws.



- Step 3** Open the bottom cover.  
**Step 4** The M.2 Key B for 4G/LTE socket is located on the bottom side of the mainboard.  
**Step 5** Identify the M.2 Key B for 4G/LTE socket, insert a M.2 Key B for 4G/LTE module into the socket and then fasten a screw.



- Step 6** Put the bottom cover and fasten eight screws back onto the system.