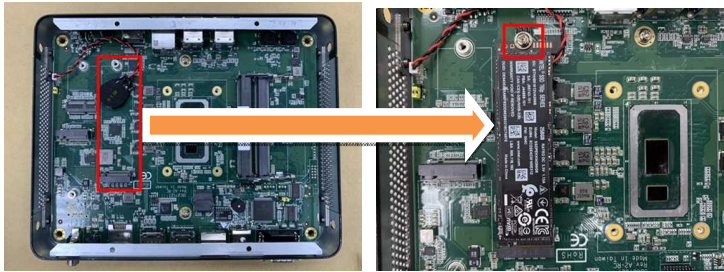


2 Installation of M.2 Device

- Step 1 Turn off the system and unplug the power cord.
 Step 2 Turn the system upside down to locate screws at the bottom and then loosen all screws.



- Step 3 Open the TOP cover.
 Step 4 Located the M.2 socket on main board.
 Step 5 Identify the M.2 slot, insert a M.2 module into the socket and then fasten a screw.



- Step 6 Put the TOP cover and fasten four screws back onto the system.

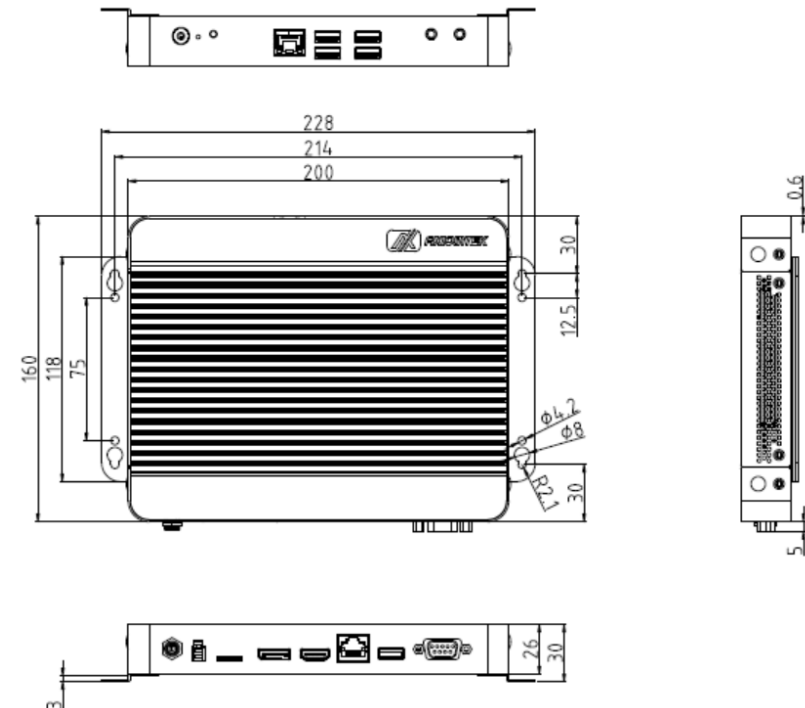
DSP501-527 Quick Installation Guide

Packing List

System Unit x 1	60W power adapter x 1
Quick Installation Guide x 1	

- Do not try to apply power to the system if any damaged components.

Dimensions



I/O Outlets

The following figures show I/O outlets on the DSP501-527.

➤ Front View



➤ Rear View



1	12VDC power input	9	Mic in
2	Remote power switch	10	Line out
3	SIM card	11	USB 3.1
4	DP++	12	GbE LAN port
5	HDMI	13	HDD LED
6	Device management port	14	Reset switch
7	USB 2.0	15	Power switch
8	RS-232		

1 Installation of Memory DIMM1 / DIMM2 Device

Step 1 Turn off the system and unplug the power cord.

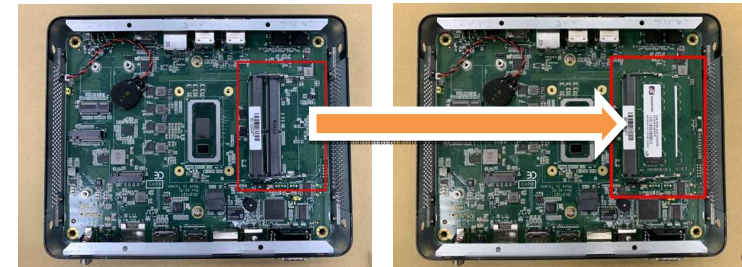
Step 2 Turn the system upside down to locate screws at the bottom and then loosen all screws.



Step 3 Open the TOP cover.

Step 4 Located the DIMM socket on main board.

Step 5 Locate the memory module, insert a gold colored contact into the socket and push the module two end latches till locked.



Step 6 Put the TOP cover and fasten four screws back onto the system.