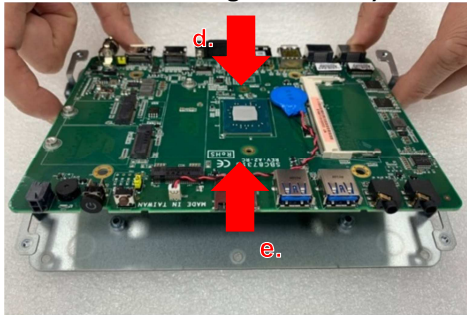
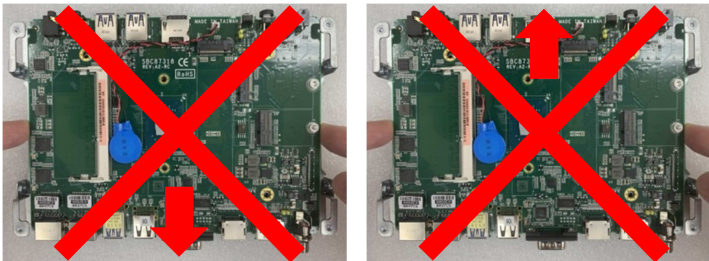


- d. Raise the front part of the main board by slightly pressing the bottom side down.
- e. Remove the main board from the back cover by lifting the board upward (as illustrated in the figure below)



**WARNING!** To prevent damaging the main board and its delicate components, DO NOT forcefully pull the main board forward or backward without lifting the board first.



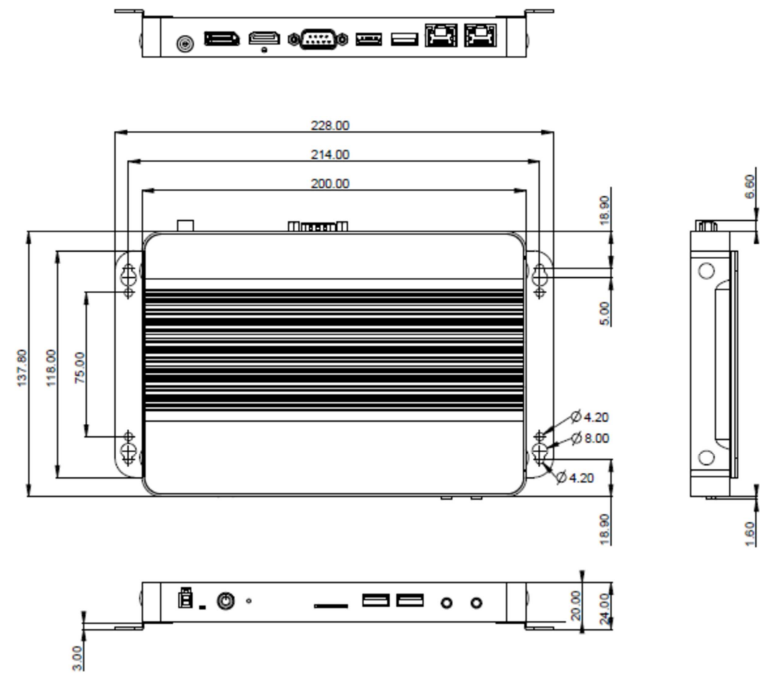
## DSP300-318 Quick Installation Guide

### Packing List

System Unit x 1	DVD/CD x 1 (for Driver & Manual)
Quick Installation Guide x 1	36W power adapter x 1
US power cord x 1 or EU power cord x 1	Foot Pad x 4

➤ Do not try to apply power to the system if any damaged components.

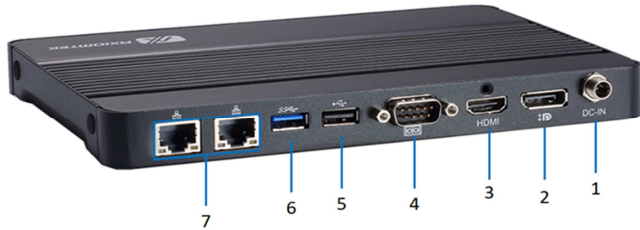
### Dimensions



## I/O Outlets

The following figures show I/O outlets on the DSP300-318.

### ➤ Front View



### ➤ Rear View



1	12VDC power input	9	Line-out
2	DP	10	USB 3.0
3	HDMI	11	SIM card
4	Serial Port	12	Reset switch
5	USB 2.0	13	Power switch
6	USB 3.0	14	HDD LED
7	GbE LAN ports	15	Remote power switch
8	MIC-in		

## Installation of SO-DIMM Memory

\* To save your installation effort, we recommend purchasing all memory modules from Axiomtek, and we will have them fully installed in the system unit prior to delivery.

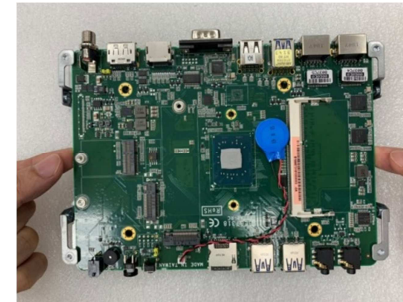
\* Before assembly, please adjust screw torque force to 4.0~6.0 kgf-cm.

### Installation of Memory SDIMM1 Device

Please refer to User manual, if you like to know the installation with detail.

**CAUTION:** The main board contains delicate components and can be easily damaged during removal. To prevent damaging the main board and its components, follow the instructions below to remove the main board.

- Identify the positioning openings on the main board, as highlighted in the picture below. Also notice the positioning posts underneath that come through the openings from the back.
- Use both hands to hold the main board by the left and right sides.



- To prevent the positioning posts underneath from scratching the main board, gently lift the board vertically upwards; until all openings are completely separate from the posts underneath. Then slightly pull the main board backward, until the board's top left and right edges have left the back cover frame (as marked in the figure below).