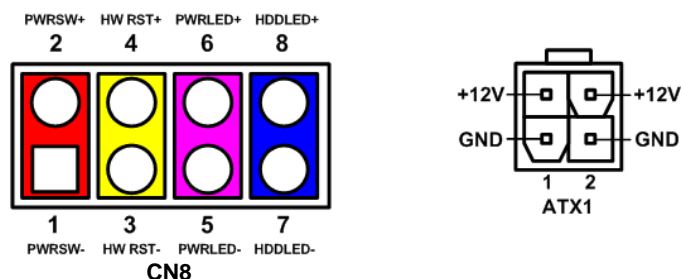


## Quick Start



The basic procedures required to power on CEB94021 with CEM Type 6 module installed:

- (1). Make sure the power is OFF before connecting to the CEM module.
- (2). Check all jumper settings and make sure they are at default settings; especially JP1 (2-3 close).
- (3). Install the CEM module onto CEB94021 Application Board.
- (4). Properly install all necessary peripheral devices such as hard disk, display, keyboard and etc. to the CEB94021.
- (5). Install a momentary on/off button/switch onto CN8 pin 1 and 2.
- (6). Firmly attach power supply to power input connector (ATX1).
- (7). Turn on the power.
- (8). Press the on/off button/switch to start the system.

## CEB94021 Quick Installation Guide

### Checklist

- ✓ CEB94021 Board x1
- ✓ Quick Installation Guide x1
- ✓ Product Information DVD x1
- ✓ 5H\*8L\*5L\*M2.5 Hex copper stand-off, true color x6
- ✓ USB Cable x1
- ✓ VGA Cable x1

**Note:** Please contact your local vendors if any damaged or missing items. DO NOT apply power to the board if there is any damaged component.

### Connector

Connector	Description
CN1~CN2, CN9~CN10	COM3~COM6 Connectors
CN3~CN4	Digital I/O Connectors
CN5~CN6	USB 2.0 Connectors
CN8	Front Panel Connector
CN11	USB 3.0 Connector
CN12	Audio Connector
CN13	VGA Connector
CN14~CN15	Ethernet LED Connector
CN16	SIM Card Socket
CN17, CN20	Ethernet Connectors
CN18	SATA Connector
CN19	SATA Power Connector
CN21~CN22	PCI-Express Mini Card Connectors
CN23	Inverter Connector
CN24	SMBus Connector
CN25	I2C Connector
CN26	LVDS Connector
CN27	DDI Connector
FAN1	Fan Connector
ATX1	ATX Power Connector
SCN1~SCN2	COM Express™ Connectors

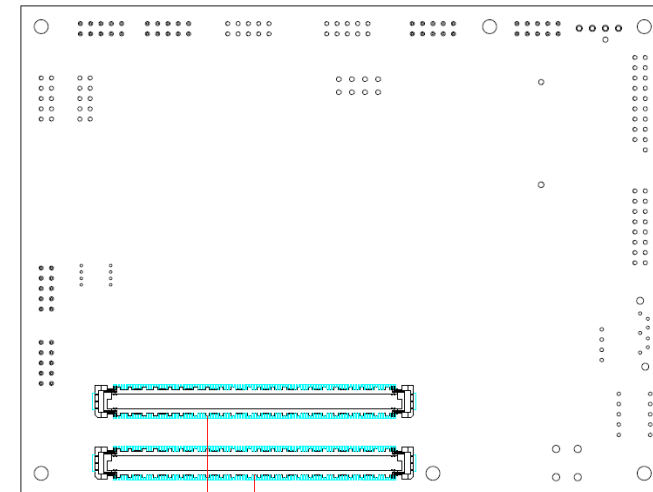
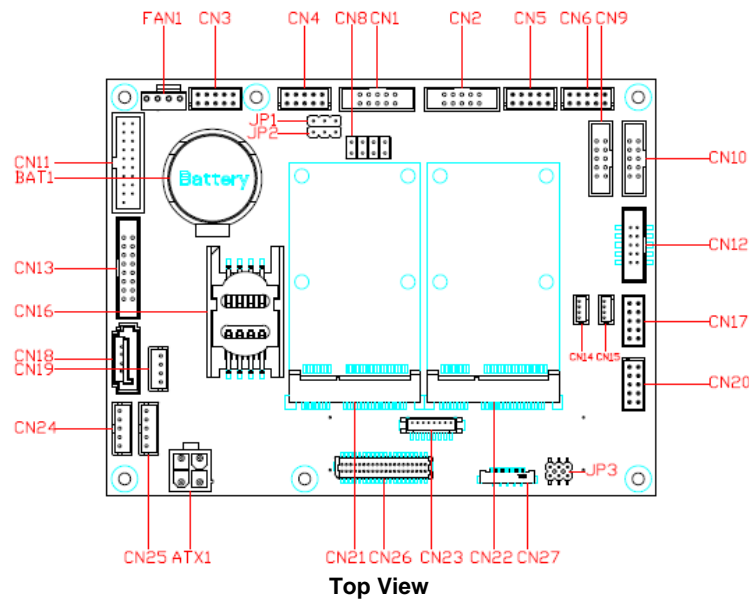
## Jumper Settings

Before applying power to the CEB94021, please make sure all of the jumpers are in factory default positions.

Jumper	Description	Setting
JP1	Auto Power On Default: Disable	2-3 Close
JP2	Restore BIOS Optimal Defaults Default: Normal Operation	1-2 Close
JP3	LVDS Voltage Selection Default: +3.3V	1-2 Close

**Note:** Please refer to the product information DVD for the complete user's manual, drivers and utilities. User's manual and related documents are in Acrobat PDF format.

## Board Layout



Bottom View

## Assembly Drawing

