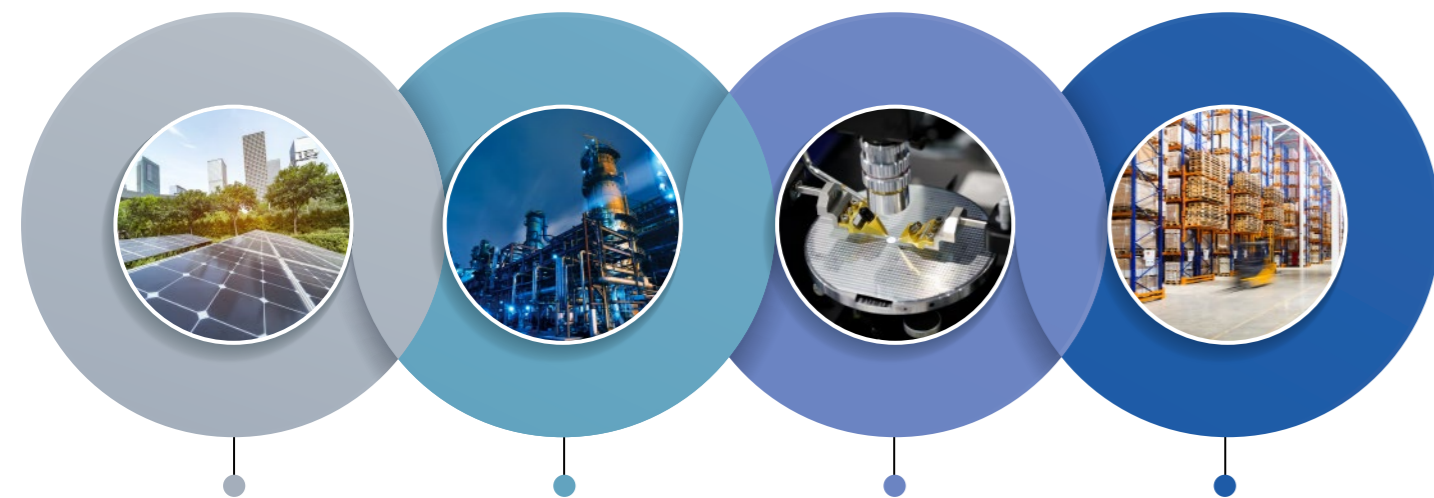


AIoT Solutions in Automation



Artificial intelligence (AI) is everywhere these days. In response to the growing needs driven by AI, Axiomtek is developing a series of embedded systems for AI at the edge solutions. This product line is dedicated specifically to AI inference, GPU computing, machine learning, image processing, the Artificial Intelligence of Things (AIoT), and much more. Axiomtek delivers edge AI embedded systems in a wide range of form factors and configurations to meet the demands of various AI applications: from the low power consumption yet high-performance embedded systems to the server-grade industrial PCs, helping our customers achieve operational improvements, increased productivity, performance boost, and efficiency gains in manufacturing, transportation, agriculture, smart cities, and retail industry.

Target Market



Smart Energy

- Solar Energy
- Wind Energy
- Electrical Substation

Process Automation

- Chemicals & Pharmaceuticals
- Food & Beverages
- Oil Refinery
- Steel Plant

Smart Manufacturing

- Automobile
- Electronic Equipment
- Semiconductor

Logistics

- Warehouse
- Autonomous Mobile Robots (AMR)
- Automated Guided Vehicle (AGV)



AIoT Solutions in Automation



ASIA

Axiomtek Co., Ltd (HQ)
8F., No.55, Nanxing Road, Xizhi District,
New Taipei City 221, Taiwan
Tel +886-2-8646-2111
Fax +886-2-8646-2555
E-mail info@axiomtek.com.tw

Axiomtek Technology Co., Ltd
10F, Block B, Build 6 (Baohui Building),
Baoning Science & Technology Park,
No.1, Qingxiang Road, Longhua New
District, Shenzhen 518109, P.R. China
Tel +86-0755-66865899
Fax +86-0755-66863068
E-mail axcn@axiomtek.com.cn

Axiomtek Japan Co., Ltd.
Room 305, 1-chome-9-5 Kanda
Awajicho, Chiyoda City, Tokyo
101-0063, Japan
Tel +81-(0)3-6206-0308
E-mail info@axiomtek.co.jp

Axiomtek (Malaysia) Sdn. Bhd.
No 16, Jalan Tandang 51/205A,
Seksyen 51, 46050 Petaling Jaya, Selangor,
Malaysia
Tel +603-77731203
Tel +603-77724403
E-mail info@axiomtek.com.my

Axiomtek (Thailand) Co., Ltd.
7/17 Moo 6, Tumbol Banmai,
Amphur Pakkret, Nonthaburi,
Thailand 11120
Tel +662-573-4725
Fax +662-573-4726
E-mail sales@axiomtek.co.th

USA

Axiomtek
18138 Rowland Street, City of Industry,
CA 91748, USA
Tel +1-626-581-3232
Fax +1-626-581-3552
E-mail info@axiomtek.com
sales@axiomtek.com

Regional Sales Office
Tel +1-626-581-3232
Western Region ext. 116
Northeast/Southeast Region ext. 123
North Central Region ext. 189

Axiomtek Systems
300 Griffin Brook Drive, Methuen,
MA 01844, USA
Tel +1-978-258-0108
E-mail sales@axiomtek.com

EU

Axiomtek Deutschland GmbH
Hans-Böckler-Str. 10,
40764 Langenfeld, Germany
Tel +49-2173-399360
Fax +49-2173-3993636
E-mail sales@axiomtek.eu

Axiomtek UK Limited
Office 18, 2 Mount Street,
Manchester, M2 5WQ, UK
Tel +44(0)7767271699
E-mail wen@axiomtek.com.tw

Axiomtek ITALIA S.r.l.
Via Pavia, 21, 20835 Muggiò (MB),
Italy
Tel +39-02-664299.1 r.a.
Fax +39-02-66400279
E-mail info@axiomtek.it

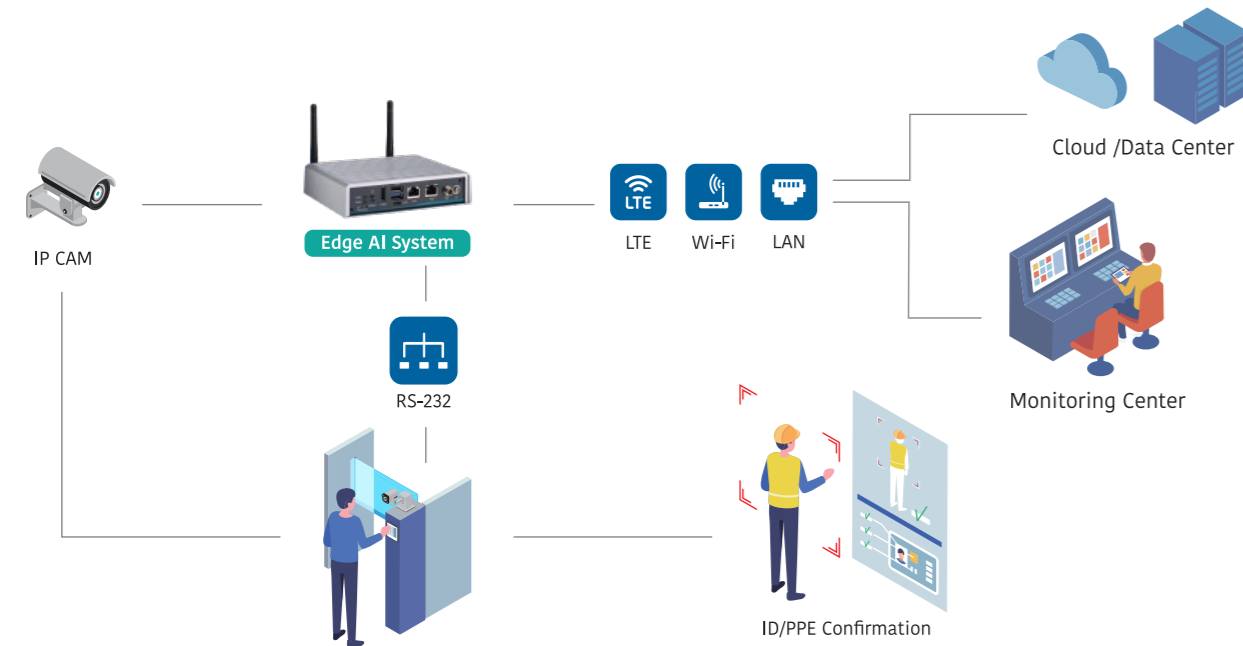


Security & Surveillance



Personal Protection Equipment (PPE) Detection & Access Control

Safety and security at the workplace have been the major concern for every employee and employer in the industry. In order to prevent the risk of accidents and reduce the chances of injuries and death, personal protective equipment (PPE) detection plays an important role in the workplace. Axiomtek's AI-enabled embedded system not only helps detect whether workers are wearing their safety vests and helmets properly, but it also can validate the authorization of workers before they enter the site.



AIE100-903-FL
Fanless Edge AI System with NVIDIA® Jetson Nano™ SoM, HDMI, GbE LAN, GbE PoE, and 2 USB



eBOX800-900-FL
Rugged IP67-rated Fanless Edge System with NVIDIA® Jetson™ TX2, HDMI, GbE LAN, 1-CH PoE, USB 2.0, and 100 to 240 VAC Power Input



IPC974-519-FL
4-slot Industrial System with LGA1151 Socket Intel® Xeon® E3 v5, 7th/6th Gen Intel® Core™ i7/i5/i3 & Celeron® Processor, Intel® C236, Front-access I/O, PCIe, and PCI Slots



MVS900-512-FL
Fanless Vision System with LGA1151 Socket 7th/6th Gen Intel® Core™ i7/i5/i3 & Celeron® Processor, Intel® Q170, Vision I/O, 4-CH PoE, and 4-CH LED Output



eBOX671-521-FL
Fanless Embedded System with LGA1151 9th/8th Gen Intel® Core™ i7/i5/i3 & Celeron® Processor, 4-CH PoE, and MXM 3.1 Type A



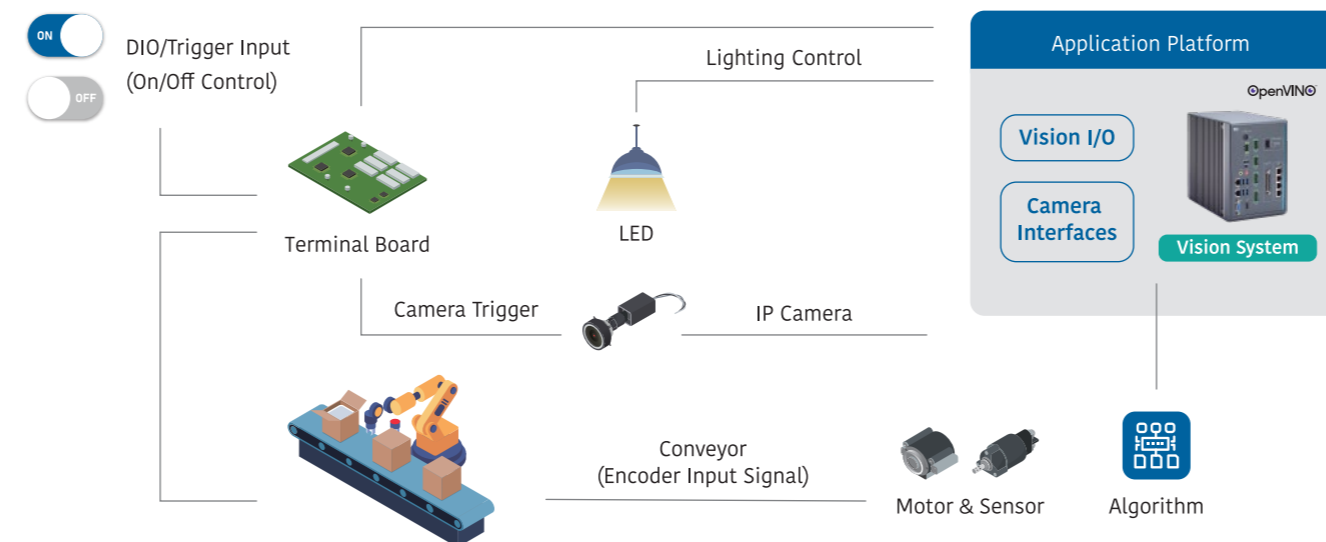
AIE500-901-FL
Fanless Edge AI System with NVIDIA® Jetson™ TX2 Series SoM, HDMI, 2 GbE LAN, 2 USB, 2 COM or 2 CAN, and 12 or 24 VDC

Smart Manufacturing

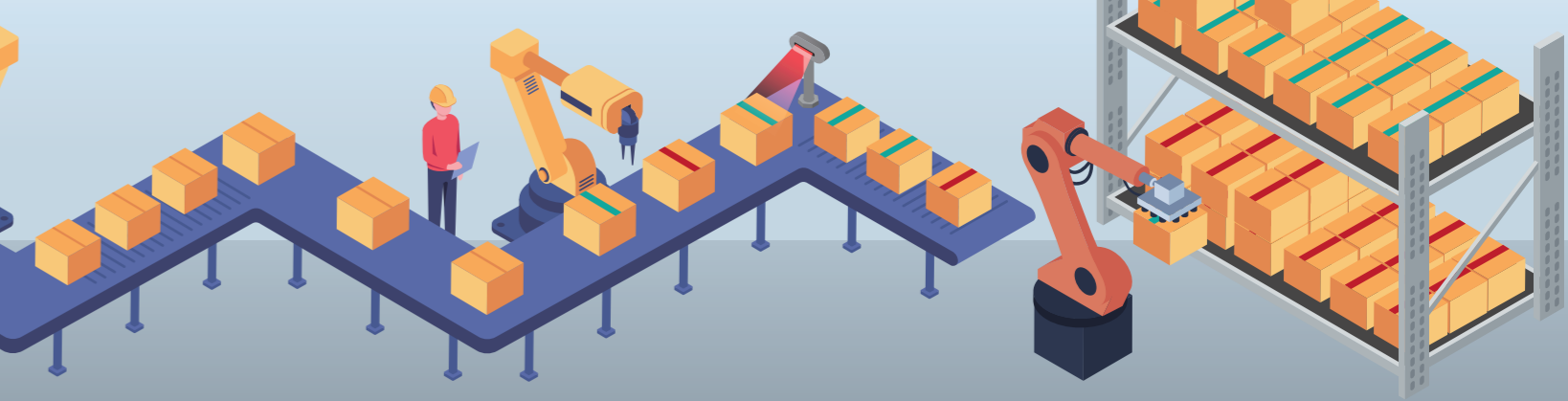


Automated Optical Inspection (AOI)

Today's printed circuit boards (PCBs) are becoming more complex with smaller and more densely compact components. By integrating artificial intelligence (AI), automated optical inspection (AOI) is able to expand its inspection capabilities through machine learning, which facilitates increased yield, improves fabrication operations and processes, and reduces manual operations. In order to process images and signals quickly and accurately, the AI-enabled embedded vision system with a high-performance Intel® Xeon® & Core™ processor and support of Intel® OpenVINO™ toolkit is required. The embedded system must integrate real-time vision I/O to connect triggers, optical sensors and LED lighting control and support camera interfaces to achieve automated online inspection.



Warehouse Logistics



Smart Packaging

Packaging affects every single part of logistics operation throughout supply chains. To reduce labor costs and boost productivity, artificial intelligence (AI) can make the operation smarter. Through the combination of the 3D camera, robotics arm, barcode scanner, and AI, Axiomtek's edge AI system helps accelerate the processes of carton dimension measurement, carton classification, carton color detection, pallet optimization, and more. By integrating wireless connectivity and cloud services, the data analysis result and freight information can be transferred from the edge to the data center and monitoring center for further use in data optimization, freight tracing, and freight management.

