



www.axiomtek.com



Smart Retail
Solutions

Intelligent Retail Solutions

Building a Seamless Shopping Experience for Users

As the digital transformation for the retail industry continues to shape stores, retail businesses have created and integrated a seamless online engagement with a dynamic in-store customer experience to remain competitive in the ever-changing retail climates. Retailers are leveraging the use of advanced technology with the goal of reducing their operation costs, improving sales, boosting profitability, and increasing customer engagement.

Axiomtek's retail solutions are designed to support the retail industry's quest to be the best in class. Our advanced, feature-rich, and easy-to-deploy retail computer products are formulated for cutting-edge retail applications such as in-store signage and interactive kiosks.

■ Our Advantages

- 1 Advanced, feature-rich, and easy-to-deploy retail computer products
- 2 Value-added Remote Device Management (RDM) firmware for retail devices
- 3 Flexible, modular design and rapid customization
- 4 High quality, reliable products
- 5 System integration capability
- 6 Ten-year rich experience and know-how in the retail industry



Intelligent Remote Device Management (RDM)



Digital Signage Players
In-store Communications



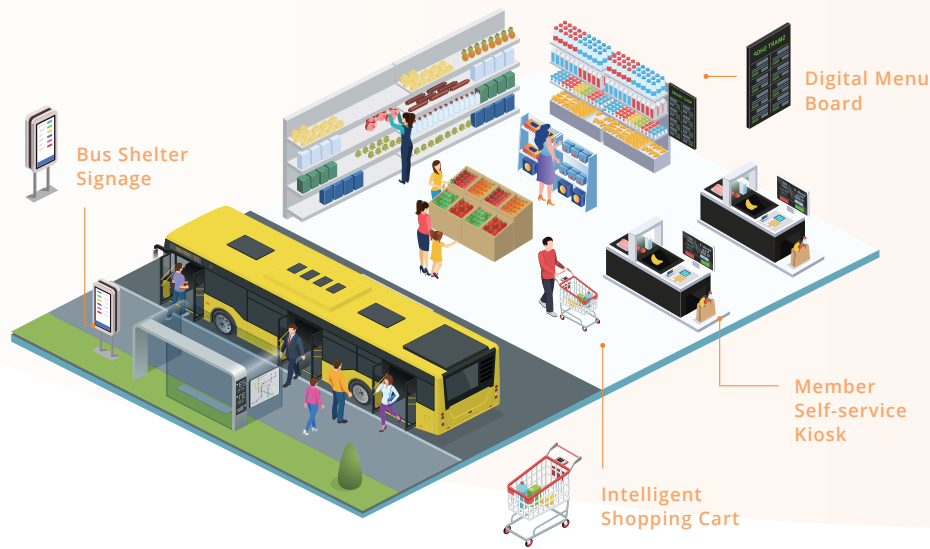
SDM Modules
Intelligent Shopping Cart | Intelligent Vending Machine



Interactive Touch Panel Computers
Interactive Digital Signage | Interactive Whiteboard



Self-service Kiosks
Interactive Kiosk | Self-service Terminal



Digital Signage Player (DSP) Series

DSP511



4K Digital Signage Player

- 11th Gen Intel® Core™ i5/i3 or Celeron® processor (Tiger Lake)
- 2 DDR4-3200 SO-DIMM for up to 64GB of memory
- Supports 4 independent 4K displays via HDMI 2.0
- 4 USB, one 2.5G LAN and GbE LAN ports
- 1 M.2 Key E 2230 for Wi-Fi/Bluetooth
- 1 M.2 Key B 3052 for 5G/4G/LTE
- 1 M.2 Key M 2280 for storage



DSP500



4K Digital Signage Player

- 9th/8th Gen Intel® Core™ i7/i5/i3 or Pentium® processor (Coffee Lake)
- 2 DDR4-2400 SO-DIMM for up to 32GB of memory
- Supports 3 independent 4K displays via HDMI 2.0
- 4 USB and GbE LAN ports
- 1 M.2 Key E 2230 for Wi-Fi/Bluetooth
- 1 M.2 Key B 3042 for 4G/LTE
- 1 M.2 Key M 2280 for storage



DSP501-527



Fanless 4K Digital Signage Player

- 8th Gen Intel® Core™ i5/i3 or Celeron® processor
- 2 DDR4-2400 SO-DIMM for up to 32GB of memory
- Supports 2 independent 4K displays via DisplayPort++ and HDMI 2.0
- 5 USB and GbE LAN ports
- 1 M.2 Key E 2230 for Wi-Fi/Bluetooth
- 1 M.2 Key B 3042 for 4G/LTE



DSP600-211



AMD-Based 4K Digital Signage Player

- AMD Ryzen™ Embedded V1000 series
- 2 DDR4-2400 SO-DIMM for up to 32GB of memory
- Supports 4 independent 4K displays via HDMI 2.0
- 4 USB and 2 GbE LAN ports
- 1 M.2 Key E 2230 for Wi-Fi/Bluetooth
- 2 M.2 Key M 2280 for storage



DSP300-318



Fanless Digital Signage Player

- Intel Atom® Processor x5-E3950, Pentium® Processor N4200 or Celeron® Processor N3350/J3455
- 2 DDR3L-1600 SO-DIMM for up to 8GB of memory
- Supports 2 independent 4K displays via DisplayPort 1.2 and HDMI 1.4
- 4 USB and 2 GbE LAN ports
- 1 M.2 Key E 2230 for Wi-Fi/Bluetooth
- 1 M.2 Key B 3042 for 4G/LTE
- Low power consumption
- 1 M.2 Key M 2280 for storage



Interactive Touch Computer (ITC) Series

ITC150WM/ITC210

15.6"/21.5" FHD TFT LCD Modular Interactive Touch Computer

- Swappable CPU card design (Intel® SDM-S/Intel® SDM-L)
- Aspect ratio: 16:9
- 300 nits (ITC150WM) and 250 nits (ITC210) brightness
- Slim bezel with less than 40 mm thickness (ITC150WM) and 50 mm thickness (ITC210)
- Supports projected capacitive touch with 10-point touch functionality
- Supports add-on modules and mounting kits (optional)



Smart Display Module (SDM) Series

SDM300S



Intel® Smart Display Module Small (Intel® SDM-S)

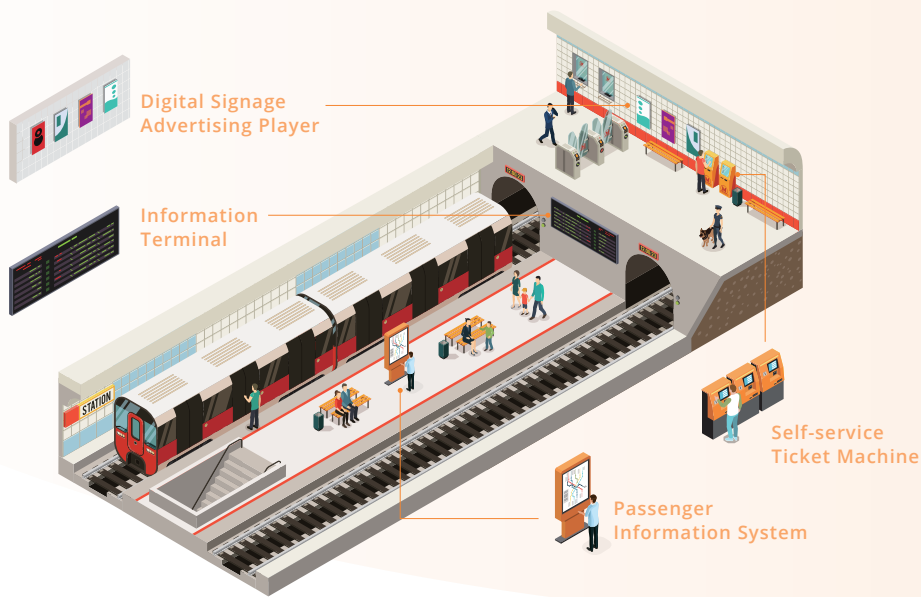
- Intel® Pentium® processor N4200 or Celeron® processor N3350 (Apollo Lake)
- LPDDR4 for 4GB of memory onboard (8GB optional)
- 64GB eMMC onboard (32G optional)
- 2 USB and GbE LAN ports
- 1 M.2 Key E 2230 for Wi-Fi/Bluetooth
- Small form factor for easy integration in compact displays

SDM500L



Intel® Smart Display Module Large (Intel® SDM-L)

- 8th Gen Intel® Core™ i7/i5/i3 or Intel® Celeron® processor (Whiskey Lake-U)
- 2 DDR4-2400 SO-DIMM for up to 32G of memory
- 4 USB and GbE LAN ports
- 1 M.2 Key E 2230 for Wi-Fi/Bluetooth
- 1 M.2 Key B 2242 and 1 M.2 Key M 2280 for storage
- 1 additional HDMI and 1 USB Type-C (optional)
- Supports Intel® AMT 12



Open Pluggable Specification (OPS) Series

OPS520



OPS Digital Signage Player

- LGA1200 Socket 11th/10th Gen Intel® Core™ i7/i5/i3 or Celeron® Processor (Rocket Lake)
- 2 DDR4-2933 SO-DIMM for up to 64GB of memory
- 1 USB 3.2 Gen2 port
- 1 M.2 Key M 2280 for storage
- 1 M.2 Key E 2230 for Wi-Fi/Bluetooth
- Supports Intel vPro® platform (Intel® Q570)
- Supports TPM 2.0
- Easy installation and maintenance

Self-Service Kiosk Series

SSK515



Self-Service Kiosk (CUBE)

- Supports Intel® SDM-S or Intel® SDM-L with Intel® Core™ or Celeron® processor (Whiskey Lake-U)
- 15.6" FHD with 300 nits of brightness and PCAP touch screen
- Supports 1D/2D barcode scanner
- Supports 2"/3" thermal printer
- Supports 13.56 RFID reader

SSK315



Self-Service Kiosk (REGATA)

- Supports Intel® SDM-S or Intel® SDM-L with Intel® Core™ or Celeron® processor (Whiskey Lake-U)
- 15.6" optical bonding LCD with wide viewing angle and 400 nits of brightness
- Supports floor stand and countertop stand options
- Dual illuminating status LEDs modular design
- All-in-one seamless design

Intelligent Remote Device Management (RDM)

■ Maximizing Your Smart Retail Business with Axiomtek's Intelligent RDM

Intelligent Remote Device Management (RDM) is a value-added remote device management software for Axiomtek's digital signage players. Through the use of Axiomtek's RDM software, systems integrators (SI) and managed service providers (MSP) can remotely set-up or troubleshoot the systems. End-users can also easily and effectively manage and maintain multiple digital signage devices remotely.

Saving Time,
Saving Cost



Easy Deployment for
Signage Devices



Decreasing Downtime,
Increasing Productivity



Hardware EDID* Emulation

EDID*:
Extended Display Identification Data

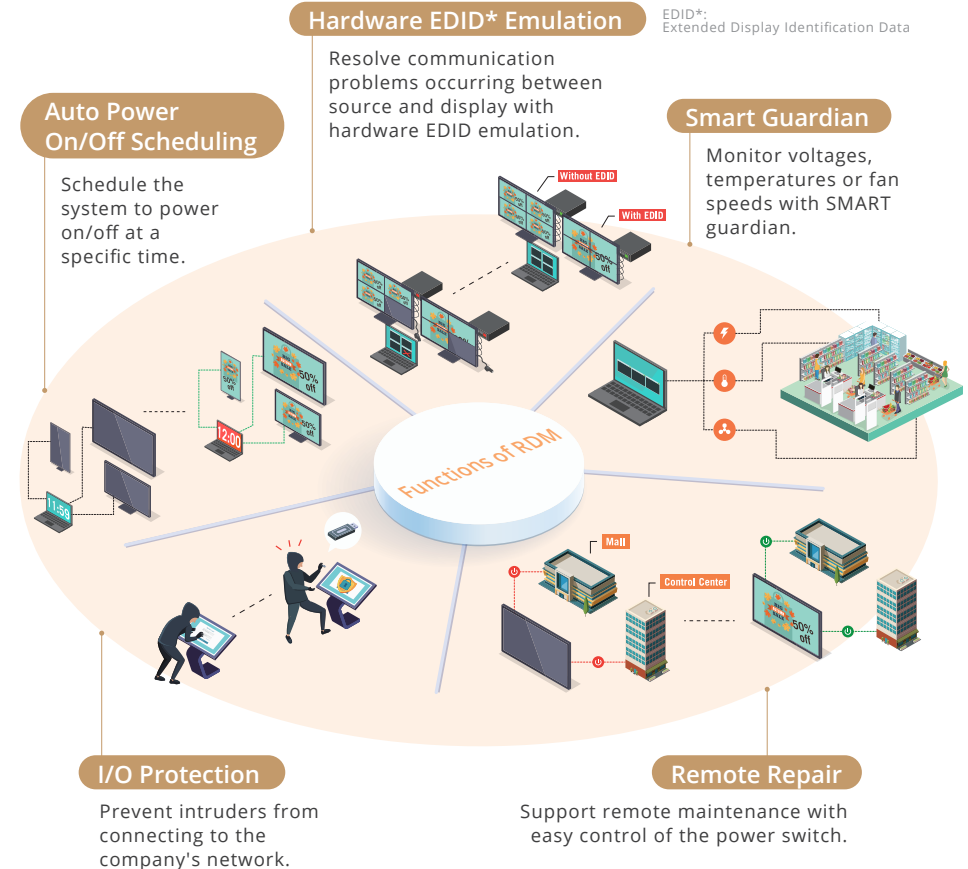
Resolve communication problems occurring between source and display with hardware EDID emulation.

Auto Power On/Off Scheduling

Schedule the system to power on/off at a specific time.

Smart Guardian

Monitor voltages, temperatures or fan speeds with SMART guardian.





ASIA

Axiomtek Co., Ltd (HQ)

8F., No.55, Nanxing Road, Xizhi District,
New Taipei City 221, Taiwan

T/ +886-2-8646-2111

F/ +886-2-8646-2555

E/ info@axiomtek.com.tw

Axiomtek Technology (Shenzhen) Co., Ltd.

Unit GH, 6F, Building 7 (Block B),
Baoneng Science and Technology Park,
Longhua Street, Qinghu Community,
Qinghu Village, Longhua District,
Shenzhen China

T/ +86-0755-66865899

F/ +86-0755-66863068

E/ axcn@axiomtek.com.cn

Axiomtek Japan Co., Ltd.

3F, 1-7-11, Higashi Nihonbashi,
Chuo-Ku, Tokyo 103-0004,
Japan

T/ +81-(0)3-6206-0308

E/ info@axiomtek.co.jp

Axiomtek (Malaysia) Sdn. Bhd.

No 16, Jalan Tandang 51/205A,
Seksyen 51, 46050 Petaling Jaya,
Selangor, Malaysia

T/ +603-77731203

T/ +603-77724403

E/ info@axiomtek.com.my

Axiomtek (Thailand) Co., Ltd.

7/17 Moo 6, Tumbol Banmai,
Amphur Pakkret, Nonthaburi,
Thailand 11120

T/ +662-573-4725

F/ +662-573-4726

E/ sales@axiomtek.co.th

USA

Axiomtek (U.S. HQ)

18138 Rowland Street, City of
Industry, CA 91748, USA

T/ +1-626-581-3232

F/ +1-626-581-3552

E/ info@axiomtek.com
sales@axiomtek.com

Regional Sales Office

Western Region ext. 116
Northeast/Southeast Region ext. 123
North Central Region ext. 189

T/ +1-626-581-3232

Axiomtek Systems

300 Griffin Brook Drive,
Methuen, MA 01844, USA

T/ +1-978-258-0108

EU

Axiomtek Deutschland GmbH

Elisabeth-Selbert Strasse 21a
40764 Langenfeld, Germany

T/ +49-2173-399360

E/ welcome@axiomtek.de

Axiomtek UK Limited

Peter House, Oxford Street,
Greater Manchester, M1 5AN

T/ +44(0)1612093680

E/ info@axiomtek.co.uk

Axiomtek ITALIA S.r.l.

Via Pavia, 21, 20835 Muggiò (MB),
Italy

T/ +39-02-664299.1 r.a.

E/ info@axiomtek.it

