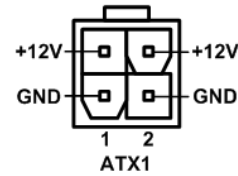
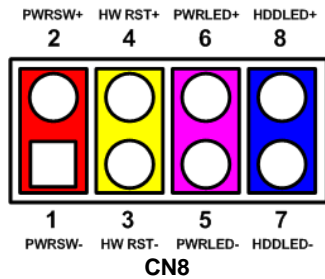


Quick Start



The basic procedures required to power on CEB94021 with CEM Type 6 module installed:

- (1). Make sure the power is OFF before connecting to the CEM module.
- (2). Check all jumper settings and make sure they are at default settings; especially JP1 (2-3 close).
- (3). Install the CEM module onto CEB94021 Application Board.
- (4). Properly install all necessary peripheral devices such as hard disk, display, keyboard and etc. to the CEB94021.
- (5). Install a momentary on/off button/switch onto CN8 pin 1 and 2.
- (6). Firmly attach power supply to power input connector (ATX1).
- (7). Turn on the power.
- (8). Press the on/off button/switch to start the system.

CEB94021 Quick Installation Guide

Checklist

- ✓ CEB94021 Board x1
- ✓ Quick Installation Guide x1
- ✓ Product Information DVD x1
- ✓ 5H*8L*5L*M2.5 Hex copper stand-off, true color x6
- ✓ USB Cable x1
- ✓ VGA Cable x1

Note: Please contact your local vendors if any damaged or missing items. DO NOT apply power to the board if there is any damaged component.

Connector

Connector	Description
CN1~CN2, CN9~CN10	COM3~COM6 Connectors
CN3~CN4	Digital I/O Connectors
CN5~CN6	USB 2.0 Connectors
CN8	Front Panel Connector
CN11	USB 3.0 Connector
CN12	Audio Connector
CN13	VGA Connector
CN14~CN15	Ethernet LED Connector
CN16	SIM Card Socket
CN17, CN20	Ethernet Connectors
CN18	SATA Connector
CN19	SATA Power Connector
CN21~CN22	PCI-Express Mini Card Connectors
CN23	Inverter Connector
CN24	SMBus Connector
CN25	I2C Connector
CN26	LVDS Connector
CN27	DDI Connector
FAN1	Fan Connector
ATX1	ATX Power Connector
SCN1~SCN2	COM Express™ Connectors

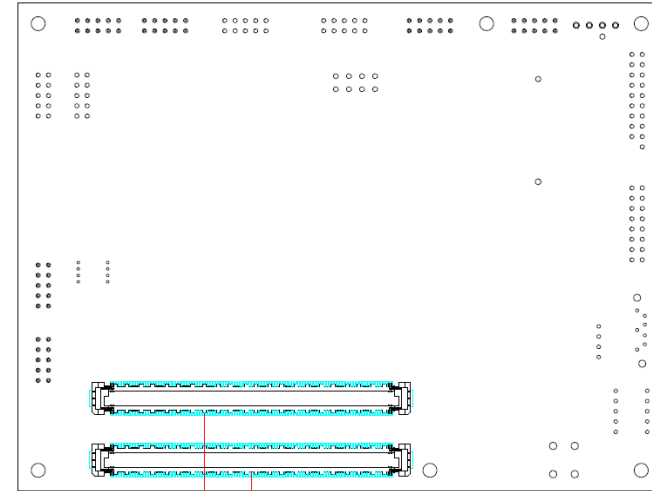
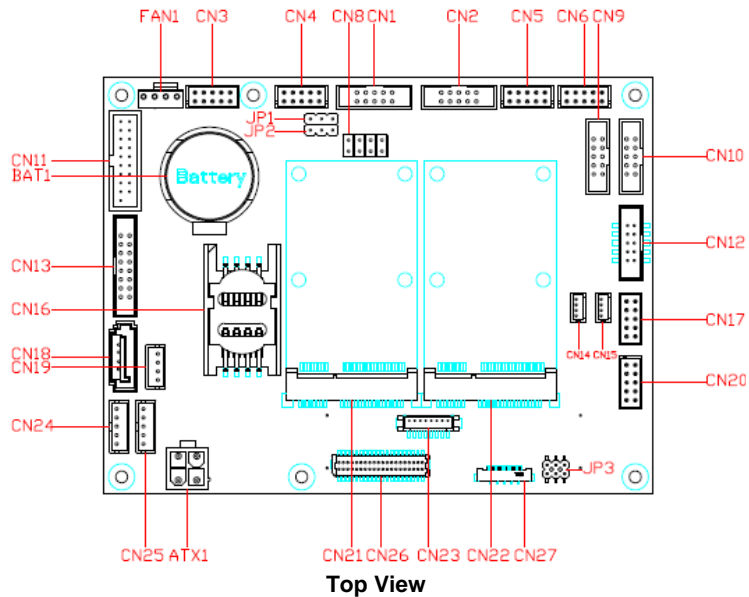
Jumper Settings

Before applying power to the CEB94021, please make sure all of the jumpers are in factory default positions.

Jumper	Description	Setting
JP1	Auto Power On Default: Disable	2-3 Close
JP2	Restore BIOS Optimal Defaults Default: Normal Operation	1-2 Close
JP3	LVDS Voltage Selection Default: +3.3V	1-2 Close

Note: Please refer to the product information DVD for the complete user's manual, drivers and utilities. User's manual and related documents are in Acrobat PDF format.

Board Layout



Bottom View

Assembly Drawing

