

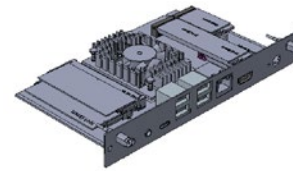
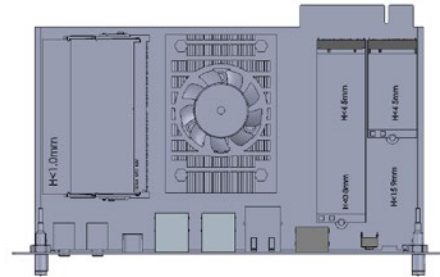
SDM500L

NEW

Smart Display Module Large with 8th Gen Intel® Core™ i7/i5/i3 Processor, HDMI and LAN

Features

- 8th gen Intel® Core™ i7/i5/i3 processor (Whiskey Lake U)
- 2 260-pin DDR4-2400 SO-DIMM for up to 32G of memory
- M.2 Key E expansion slot
- M.2 Key M expansion slot
- M.2 Key B expansion slot
- One HDMI, four USB 3.0, one USB type C and LAN
- Supports Intel® AMT 12



▲ Side View

Core System

CPU	8th gen Intel® Core™ i7 /i5 /i3 processor (Whiskey Lake U)
System Memory	2 x 260-pin DDR4-2400 SO-DIMM, up to 32G
Chipset	SoC integrated
BIOS	AMI
SSD	1 x M.2 Key M slot 1 x M.2 Key B slot
WatchDog Timer	255 levels, 1 ~255 sec.
Expansion Interface	1 x M.2 Key E slot for wifi/BT 1 x M.2 Key M slot for storage 1 x M.2 Key B slot for storage
Battery Lithium	Lithium 3V/220 mAh
Power Input	Through SDM golden finger +12V & +3.3VBS
Dimensions	175 x 100 mm
Board Thickness	1.6 mm
Operating Temperature	0°C to 60°C (+32°F to +140°F) -20 to 70 °C (-20°F to +158°F) (optional)
Humidity	10% - 95% relative humidity, non-condensing

I/O

SDM Golden Finger	1 x USB 3.0 1 x HDMI 2.0 1 x DP 1.2 1 x Serial TX/RX 2 x I ² C
Ethernet	1 port as 10/100/1000Mbps with Intel® i219; supports Wake-on-LAN (Core™ i5 and i7 support vPro function)
Audio	HD codec audio as MIC in/ Line out with Realtek ALC662
USB	4 x USB 3.0 1 x USB type C

Display

Chipset	Intel® gen 9 HD graphics
Display Interface	1 x HDMI 1.4 (4096 x 2160 @ 30p) (rear I/O) 1 x DP 1.2 (4096 x 2304 @ 60p) (golden finger) 1 x HDMI 2.0 (4096 x 2160 @ 60p) (golden finger)

Packing List

Quick installation guide

Ordering Information

Standard	
SDML500L-i5	Smart Display module large with Intel® Core™ i5 processor with HDMI, 4 x USB 3.0, 1 x USB type C and LAN
Optional	
SDB100	SDM PIB Board