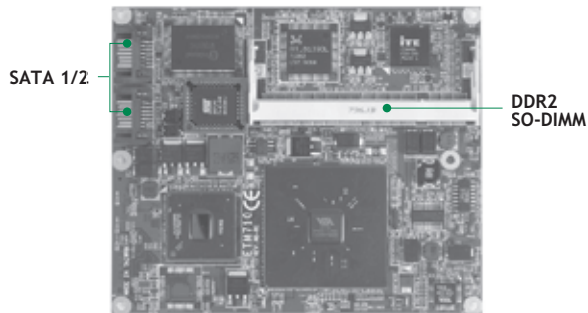


ETM710

VIA V4 ETX V3.0 SoM with Multiple I/O Features



V4 CPU
1 F.E.
LVDS/VGA
4 PCI
ISA
HD Audio

Features

ETX 3.0
LONG TERM SUPPORT



Fanless

Low Power

DualView

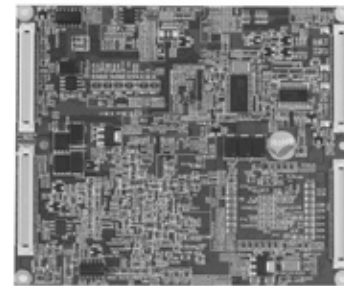
- VIA V4 compliant C7/Eden processor onboard
- VIA CX700M + ITE8888G chipset
- DDR2-400/533 up to 1GB
- 2 SATA-150, 1 PATA-133 supported
- DualView with different content & resolution
- 4 PCI Bus master, ISA Bus supported

System

CPU	VIA V4 compliant Eden/C7 processor onboard with FSB 400/533 MHz
System Memory	1 x 200-pin SO-DIMM supports DDR2-400/533 max. up to 1GB
Chipset	VIA CX700M
BIOS	Phoenix-Award
SSD	N/A
Watchdog Timer	255 levels, 1-255 sec.
Expansion Interface	4 x 32-bit PCI bus master 16-bit ISA bus
Battery	N/A
Power Requirements	VIA Eden @ 1.0 GHz, 1GB DDR2 Max. RMS: +5V @ 1.825A
Size	114 x 95 mm
Board Thickness	1.6 mm
Temperature	0° C - +60° C (32° F - 140° F), operation
Relative Humidity	10% - 95% relative humidity, non-condensing

I/O

MIO	1 x IDE; PATA-100 1 x FDD/LPT(default); with SPP/EPP/ECP supported 1 x PS/2 keyboard 1 x PS/2 mouse 2 x UARTs 1 x IrDA
SATA	2 x SATA-150
Hardware Monitoring	Detect CPU/system temperature, voltage and fan speed
Ethernet	1 port as 10/100Mbps supports Wake-on-LAN, RPL/PXE Boot ROM with Realtek RTL8139DL
Audio	HD Codec audio as MIC-in/Line-in/Line-out with VIA VT1708B
USB	4 x USB 2.0



▲ Rear view

Display

Chipset	VIA CX700M intergrated
Memory Size	Max. up to 128 MB
Display Interface	1 x VGA 1 x LVDS; 18/24-bit single/dual channel

Packing List

Quick installation guide, user's manual/utility CD, cable

Ordering Information

Standard	
ETM710VEA-1GE (P/N: E38G710101) (Fanless)	ETX 3.0 module with V4 compliant Eden 1GHz CPU onboard, VGA/LVDS LCD, 10/100Mbps Ethernet, HD audio and 2 UARTs ports
Optional	
ETM710VEA-500E (P/N: E38G710100) (Fanless)	ETX 3.0 module with ULV V4 compliant Eden 500MHz CPU onboard, VGA/LVDS LCD, 10/100Mbps Ethernet, HD audio and 2 UARTs ports
ETM710VEA-1.5G (P/N: E38G710103)	ETX 3.0 module with V4 compliant C7 1.5GHz CPU onboard, VGA/LVDS LCD, 10/100Mbps Ethernet, HD audio and 2 UARTs ports
ETB9F000	ATX form factor baseboard
507ETM71010E	ETM710 heatspreader & cooling kit with fan
507ETM71000E	ETM710 heatspreader (114 x 51 x 8mm)