

DSA-200

Digital Signage Engine Box for AUO Panel



Specifications

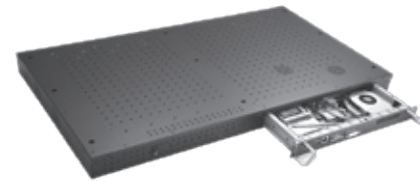
Standard Color	Black
Construction	Metal
CPU	Intel® Core™2 Duo/ Celeron® M processor
System Memory	2 x 204-pin DDR3 max. up to 8GB
BIOS	AMI
System I/O Outlet	4 X USB 2.0 1 X 10/100/1000Mbps Ethernet 1 X VGA 1 X DVI 1 X LVDS
Expansion Slot	1 x PCI Express Mini Card for wireless LAN
Power Supply	AC 100-240V, 450W
Operating Temperature	0° C - +40° C (32° F - 104° F)
Weight (net/gross)	20 kg (44.1 lb)/24.5 kg (54.1 lb)
Certification	CE
Dimensions	720 mm (28.35") (W) x 48 mm (1.89") (D) x 402 mm (15.82") (H)

Features



Low Power

- Complete engine box for DSA system integrator
- 32" ~ 42" panel module (optional)
- Supports AUO 46", 42" and 32" 1920 x 1080P
- Built-in 450 watt power supply applied for LCD and engine box
- High performance processor supported: Intel® Core™2 Duo/ Celeron® M processor
- Supports VESA FPMPLI compliant flat panel mount



Ordering Information

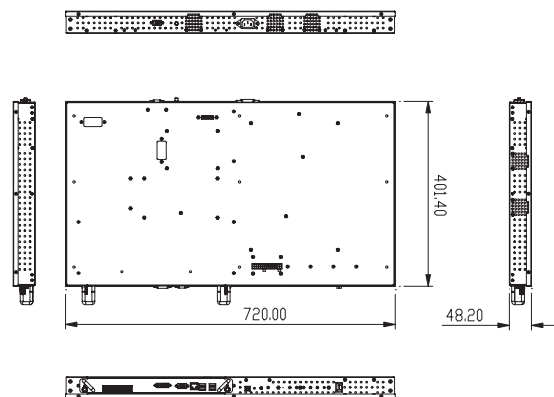
DSA-200 Digital signage box supports AUO
(P/N: E22G200100) 46", 42", 32" panel

* Specification and certifications are based on options and may vary.

Optional Accessories

E22G200102	42" front bezel with glass for DSA-200
E22G200103	42" front bezel w/o glass for DSA-200
E22G200104	46" front bezel with glass for DSA-200
E22G200105	46" front bezel w/o glass for DSA-200

Dimensions



Touch Panel Computers for Various Industry Applications

Digital Signage and Display Solutions

Medical Panel Computers

Medical Grade Monitors

GOT Fanless Touch Panel Computers

Touch Panel Computers for Infotainment

Touch Panel Computers for Automation

Touch Panel Monitors for Automation

Open Frame Panel Computers

Accessories